

Welcome to the 2011-2012 School Year

Spokane Public Schools
August 16, 2011



Spokane Public Schools
excellence for everyone



Three Important Dates for 2011-2012 School Year

- August 16 – Primary Election
- November 8 – General Election
- February 14 – School Levy Election

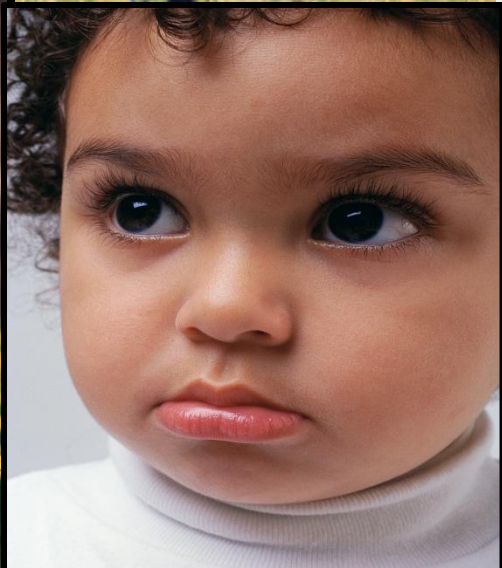
District Work Plan

2011-2012

School Support Services

Human Resources

Teaching & Learning



District Work Plan

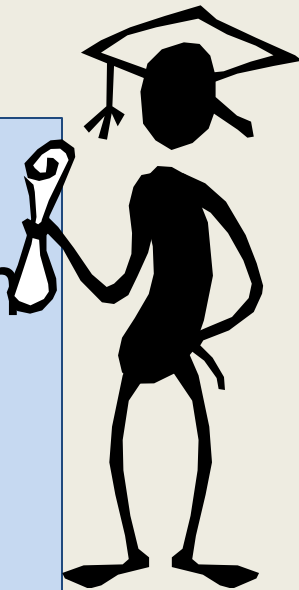
Agenda

- Introductions
- District Vision: CCR
- School Support Services
 - Business Intelligence System
 - 2012 Levy
- Marketing



District Vision

Educating all students to meet high standards and graduate from high school ready, without remediation, for postsecondary education.



Graduation Rates Improving

Spokane Public Schools

Year	On-Time Grad. Rate	Extended Grad. Rate	Cohort Dropout Rate
2006-07	57.7%	61.2%	38.2%
2007-08	60.3%	61.9%	29.3%
2008-09	62.1%	64.7%	28.7%
2009-10	70.2%	73.4%	19.6%

Graduation statistics as reported by OSPI

SPS High Schools

<u>High School</u>	<u>2008-09</u>	<u>2009-10</u>
• Ferris	79.7%	83.4%
• LC	73.5%	83.7%
• NC	68.8%	74.1%
• Rogers	50.9%	60.4%
• Shadle Park	77.7%	87.4%
• Havermale	17.7%	22.6%

District Extended Graduation Rates by Ethnicity, ELL, Special Ed., & Social Economic Status

Cohort Size		2008	2009	2010
District	2,367	61.9%	64.7%	73.4%
American Indian	89	25.0%	36.8%	55.1%
Asian/Pacific Islander	109	71.5%	63.1%	56.8%
Black	95	49.9%	57.9%	61.1%
Hispanic	94	48.0%	57.5%	65.2%
White	1,872	65.6%	67.0%	75.6%
Limited English	61	78.6%	48.4%	37.5%
Special Education	303	44.2%	36.4%	52.5%
Low Income	1,142	52.5%	55.0%	63.8%

Graduation Rates Improving

Spokane Public Schools

Year	On-Time Grad. Rate	Extended Grad. Rate	Cohort Dropout Rate
2006-07	57.7%	61.2%	38.2%
2007-08	60.3%	61.9%	29.3%
2008-09	62.1%	64.7%	28.7%
2009-10	70.2%	73.4%	19.6%

Graduation statistics as reported by OSPI

College/Career Ready

Advanced Placement Exams (measure of college readiness)

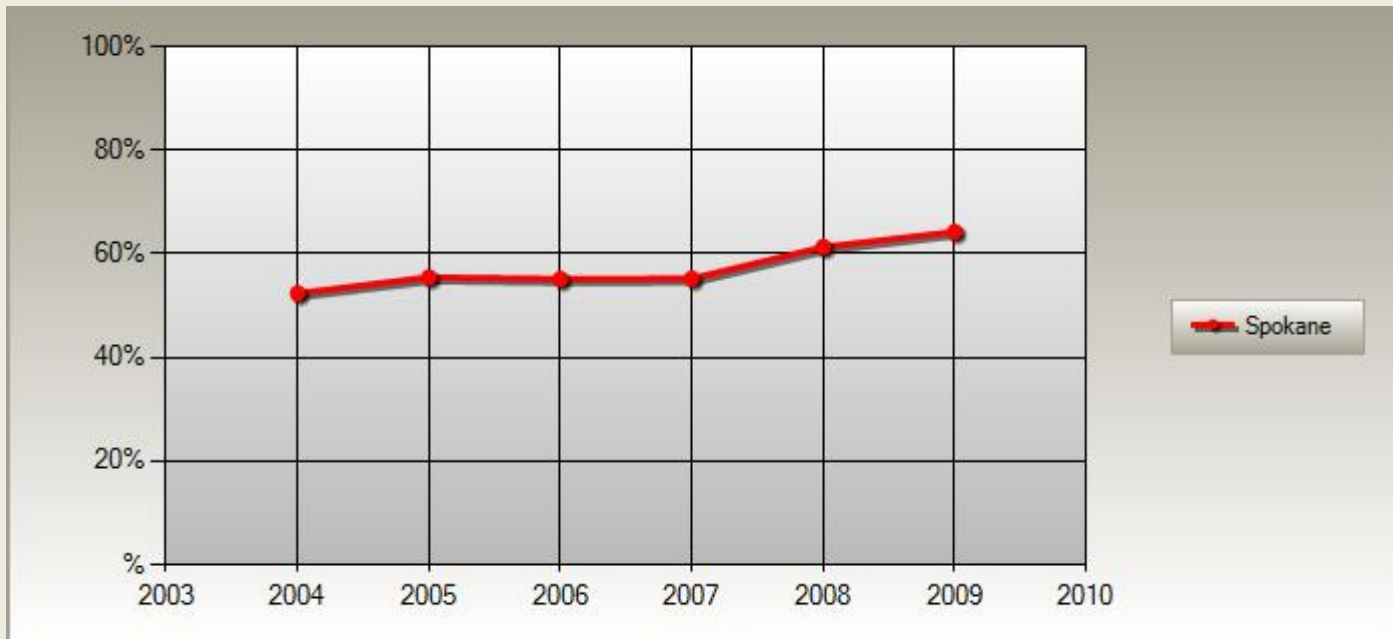
- 1990
 - 319 exams taken
 - by 249 students
 - in 12 content areas
- 2000
 - 636 exams taken
 - by 368 students
 - in 15 content areas
- 2010
 - 2,270 exams taken
 - by 1,208 students
 - in 27 content areas
- 2011
 - 2,559 exams taken
 - by 1,308 students
 - in 29 content areas

College Tracking - Washington



Graduation Year	Class Size	College Direct	To Two-Year College	To Four-Year College
2004	61389	54.6 %	26.0 %	30.1 %
2005	61308	55.2 %	25.3 %	31.5 %
2006	60649	55.1 %	25.6 %	31.2 %
2007	62938	56.3 %	25.8 %	32.2 %
2008	62041	59.5 %	27.4 %	34.0 %
2009	63268	59.4 %	27.3 %	33.8 %

College Tracking – SPS

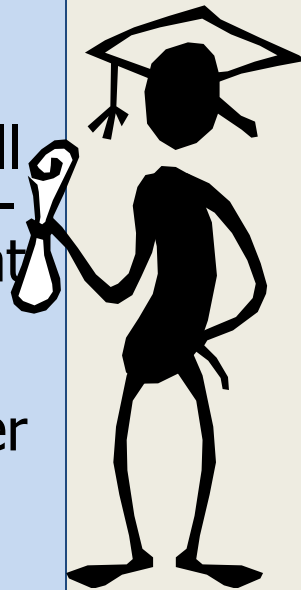


Graduation Year	Class Size	College Direct	To Two-Year College	To Four-Year College
2004	2006	52.3 %	27.5 %	25.6 %
2005	1885	55.4 %	25.5 %	31.4 %
2006	1829	55.1 %	28.4 %	28.6 %
2007	1792	55.2 %	28.0 %	27.8 %
2008	1555	61.3 %	31.3 %	31.5 %
2009	1624	64.2 %	29.6 %	36.4 %

College/Career Readiness

The level of preparation a student needs to enroll and succeed -- without remediation -- in a credit-bearing course at a postsecondary institution that offers a baccalaureate degree or a transfer to a baccalaureate program, or a high quality certificate program that enables students to enter a career pathway with potential future advancement.

Conley (2010)



School Support Services

Dr. Mark Anderson,
Associate Superintendent

Levies are for Learning

