

Spokane Public Schools Reopening Plan for the 2020-21 school year

August 2020



Spokane Public Schools
excellence for everyone



Together we can...

Letter from the superintendent

The start of a new school year is upon us, and a season we associate with excitement and new beginnings is now clouded with many uncertainties and challenges. In the wake of the COVID-19 pandemic, our daily lives and the routines we value have been disrupted in a way many never imagined was possible. It is in these moments that our ideals, values, and sense of community are more important than ever as we adhere to the mission of providing hope and opportunity for our children. Through a foundation of relationships and a commitment to unify in the shared interest of providing the best possible experience for students, we can overcome this unprecedented trial and emerge stronger together.

Our reopening plan represents our best efforts to prioritize student, staff and community safety while continuing to provide a quality education in a new and fluid environment. We learned a lot in the spring when the pandemic began, and received a great amount of useful feedback. Our Safe School Reopening Task Force and subcommittees brought together staff, students and parents to develop a comprehensive back-to-school plan. It includes options that allow families to choose what best fits their particular situation, while also preparing us to respond quickly to the many and varied pandemic phases Spokane may encounter. We have planned for many scenarios, as well as the transitions between them. Our goal is to return to in person instruction as soon as possible based on the guidance of public health officials.

Starting the year at a distance is not how we hoped to begin the 2020-21 school year, but we are determined to provide the best learning experience possible. Our teachers and staff are eager to connect with students and families and begin providing support. Thank you for your continued partnership and engagement. Together, we can have a safe, successful school year.

Dr. Adam Swinyard
Superintendent, Spokane Public Schools

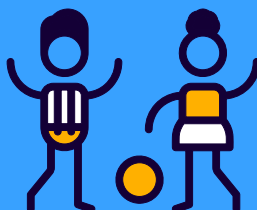
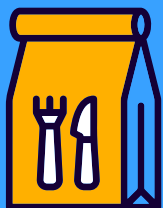
Find this plan online at spokaneschools.org/BacktoSchool2020, in addition to our FAQ about reopening schools.

Together we can...

Table of Contents

In this booklet

Reopening Plan Overview.....	4
Reopening Task Force Members.....	5
Subcommittee Members	6
School Reopening Options.....	8
Plan for when schools are closed: Real-Time Distance Learning	9
Plan for when schools are open.....	17
Learning Plans	21
Additional Resources	26



Reopening Plan Overview

The 2020-21 school year will be unlike any other. Following guidance from local and state officials, we have developed a plan that allows us to safely continue our important work as teachers and learners, despite an ever-changing environment. Because each person's situation is different, we have created a range of options so that families can choose the type of academic support they feel most comfortable having SPS provide.

When we are able to open school, students in grades K-4 will attend in person every day since it is more difficult for younger students to engage in distance learning compared to older students, and it will lessen the burden for our local child care facilities. Students in grades 5-12 will be placed on an alternating A/B schedule where half the students will attend class in the school buildings every other day. Students will have specific tasks and projects for their learning at home days.

Families who aren't comfortable having their student attend in person can register for a distance learning option that includes daily sessions with classroom teachers and specialists.

When schools are closed, we are prepared to support all students with Real-Time Distance Learning, featuring:

- Real-time school day with teacher(s)
- Identified school start and dismissal time
- Specific times scheduled for each period/subject
- Blend of live instruction, group work, and independent activities
- Specialist & elective experiences included
- Set times for intervention support and contacting teachers
- Use of Microsoft Teams as the district-wide digital platform
- Laptop check-out for all students
- Limited in person instruction provided for small groups of students

SPS is ready to be flexible and respond quickly to changes required by state and local officials. We are prepared for smooth transitions between at-home and in-person learning. We will support our students, staff and families with tools and trainings, nutrition and nurturing, patience and kindness.

Reopening Task Force Members

Steering Committee Co-Facilitators:

Adam Swinyard, Superintendent

Mark Anderson, Associate Superintendent

Committee Members

Jerrall Haynes, School Board President

Dr. Bob Lutz, Spokane County Health Officer

Stephanie Busch, Human Resources

Oscar Harris, Family Support & Community Engagement

Cindy Coleman, Business Services

Gwen Harris, Executive Director Elementary & Option Schools

Shawn Jordan, Executive Director Secondary School

Jennifer Keck, Executive Director Elementary

Megan Read, Parent Representative

Dawn Sidell, Special Needs Community

Katarina Kenlein, Student Representative

Kristy Mylroie, Communications

Tricia Kannberg, Elementary Principal

Jeremy Ochse, Middle School Principal

Steve Fisk, High School Principal

Jeremy Shea, Spokane Education Association (SEA) President

Brad Read, SEA Vice President

Michelle Jenner, SEA UniServ Director

Rebecca Powell, SEA UniServ Director



Subcommittee Members

Safety & Operations

Mark Anderson, Associate Superintendent (Chair)
Gwen Harris, School Director
Jennifer Keck, School Director
Shawn Jordan, School Director
Matt Truitt, Elementary Principal
John O'Dell, Middle School Principal
Marybeth Smith, High School Principal
Salliejo Evers, Safety, Risk Management, & Transportation
Becky Doughty, Health Services
Sabre Dahl, Human Resources
Andee Atwood, Business Services
Garrett Berdan, Nutrition Services
Lisa White, Express Childcare
Alex Navarrete, Warehouse
Phil Wright, Facility Services
Daniel Robertson, Custodial Staff
Brad Cass, Custodial Staff
Walter Long, Maintenance Staff
Selina Gieger, Nutrition Services Staff
Amber Juliano, Parent and RDH

Elementary Educational Model

Adam Swinyard, Superintendent (Co-Chair)
Heather Bybee, Chief Academic Officer (Co-Chair)
Debbie Oakley, Director of Special Programs
Dana Myers, Coordinator, Special Programs
Elementary Curriculum Coordinators: Karin Thompson (ELA),
Cindy Leonard (Science), James Russell (Social Studies), Tricia
Geselle (Math), Carol Pederson (Visual & Performing Arts),
Stephanie Splater (Health & Fitness)
Betsy Weigle, Ed Tech Coordinator
Tricia Kannberg, Elementary Principal (Regal)
Clint Price, Elementary Principal (Moran Prairie)
Sara Ball, Primary Teacher (Roosevelt)
Bonnie Williams, Primary Teacher (Grant)
Sue Pfeifer, Primary Teacher (Regal)
Patty Baer, Intermediate Teacher (Logan)
Suzanne Bantilan, Intermediate Teacher (Cooper)
Corina Fletcher, Intermediate Teacher (Woodridge)
Sam Rasmussen, Intermediate (Garfield)
Melissa Raymond, Health & Fitness (Lincoln Heights)
Melissa Percy, Science (Audubon)
Meredith McNally, Visual & Performing Arts (Adams)
Brian Trimble, Parent (Hutton)

Secondary Educational Model

Adam Swinyard, Superintendent (Co-Chair)
Heather Bybee, Chief Academic Officer (Co-Chair)
Scott Kerwien, Director of Technology & Information
Rob Reavis, Director of CTE
Secondary Curriculum Coordinators: Josh Harrison (Math), Joel
Evanson (Science), Susie Gerard (Social Studies), John Parks (ELA),
Carol Pederson (Visual & Performing Arts), Stephanie Splater
(Health & Fitness)
Mark Lund, Middle School Principal (Glover)
Ken Schutz, High School Principal (Ferris)
Theresa Meyer, Asst. Principal (LC)
Cindy McMahon, Option School Principal (The Community School)
Laura Treece, Science Teacher (Sac)
Megan McLean, Math Teacher (Lewis & Clark)
Ashley Coulson, Math Teacher (Glover)
Eric Hauck, Social Studies Teacher (Chase)
Scott Dethlefs, Skills Center Teacher (Skills Center)
Mark Vandine, Health & Fitness Teacher (North Central)
Dan Nord, Visual & Performing Arts (Lewis & Clark)
Dean Tyler-Babkirk, Visual Arts (Shaw)
Ellen Gillespie, World Languages Teacher (Rogers)
Bobbi Konshuk, Option School Teacher (The Community School)
Shamerica Nakamura, Student Support (North Central)
Bryce Wilcox, Parent (Shadle Park)
Jenifer Piper, Parent (Shaw)

Special Education Services

Becky Ramsey, Director Special Education (Chair)
Brandon Bouge, Asst. Director, Special Education
Elementary Principal - Rachel Sherwood, Bemiss
Middle School Admin - Tracey Lyde, Sacajawea
Chris Dunn - Asst. Principal, Rogers High School
Special Education Coordinators: Michelle Gwinn, Stacey Maddigan,
Jill Holmberg, Kristina Baker, Jennifer Hardt
Spring Shoupe, Paraeducator
Barb Valley, Paraeducator
Michelle Knokey, Preschool – Sheridan
Olivia Moore, Elementary - Grant
Jennifer Soter, Middle - Sacajawea
Mark Sherwood, High School - Rogers
Sara Munro, High School Teacher, Rogers
Michelle McKenzie, Preschool Teacher, Lincoln Heights
Mary Douthitt, Middle School, Chase
Kellie Power, Speech Language Pathologist
Devony Audet, Parent Representative
Julie Shepard, Parent Representative

Together we can...

Subcommittee Members - continued

English Language Development Services

Heather Richardson, Director, ELD (Chair)
Elementary Principal – Larry Quisano, Sheridan Elementary
Middle School Admin – Kent Hibbard, Garry Middle School
High School Admin – Lisa Henderson, Ferris High School
Bilingual/Language Specialist Representative – Bhakta Giri
Teacher Representatives
Molly Palermo, Rogers High School
Tommi Palm, Garry Middle School
Maria Esther Zamora, Logan Elementary School
Sally Dueweke, Regal Elementary
Parent Representative – Doresty Daniel
Recording Secretary – Naomi Hagen (ELD TOSA)

Intervention Services (Student Services)

Jodi Harmon, Director, Student Services (Chair)
Dave Crump, Director, Mental Health Services
Larry Quisano, Principal, Sheridan Elementary
John Hammil, Assistant Principal, Rogers
Erin Jordan, Coordinator, Elementary/Middle Schools
Kristina Baker, Coordinator, Elementary
Melanie Smith, Coordinator, PBIS
Chris Moore, Coordinator, Elementary
Erica Clark, School Academic Support Specialist
Debby Chandler, Secretary, Rogers
Jennifer Hardt, Coordinator, High School
Tamika Lamere, Intervention Specialist
Katey Treloar, parent
Cira May, parent

A huge thank you to all the dedicated committee members and chairs for their time and effort.

Technology Support & Access

Scott Kerwien, Director of Technology and Information (Chair)
Clay Gehring, Director Technology Services
Betsy Weigle, Educational Technology Coordinator
Greg Trepus, Technology Support Supervisor
Kristin Whiteaker, Director, Spokane Virtual & Blended Learning
Jameus Hutchens, Applications Lead Developer
Carmen Mercer, Student Intervention & Support
Corey Turner, Application Development Analyst
Darren Cromeenes, Lincoln Heights Elementary
Holly McClanahan, Regal Elementary
Kelsy Shatto, Cooper Elementary
Mark Miller, Shadle Park
Nerissa Meyer, Glover Middle School
Tami McCracken, North Central High School
Chris Dunn, Rogers High School
Eric Enser, ITSC
Chet Paulson, Audubon Elementary School
Matt Beal, Principal, Mullan Road
Kent Hibbard, Asst. Principal, Garry
Brent Perdue, Principal, Logan
LeAndra Myers, Instructional Coach, Shaw
David Ulyanchuk, Principal Assistant, Chase
Adrian Espindola, Principal, Stevens
Andre Wicks, Assistant Principal, Shadle Park

Full Distance Learning Option

Gwen Harris, Executive Director Elementary & Option Schools (Co-Chair)
Kristin Whitaker, Spokane Virtual Learning Director (Co-Chair)
Lisa Mattson, Option School Principal (On Track)
Chris Burke, Option School Assistant Principal (On Track)
Suzanne Smith, Option School Principal (TEC)
Susan Dunn, Teacher (On Track)
Jayna Ashlock, Teacher (Logan Elementary)
Heather Miciak, Instructional Coach (Regal Elementary)
Stefanie Heinen, Principal (Hamblen)
Karlee Humphrey (SVL Elementary Teacher)
Donna Herold (SVL Secondary ELA Teacher Lead)
Brynn Snyder, Parent
Dawnelle Farrell (SVL Elementary Parent)

Extracurricular & Athletics

Stephanie Splater, Coordinator, K-12 Fitness and Health, Secondary Athletics (Chair)
Shawn Jordan, Executive Director Secondary Schools
Aaron Brecek, Rogers, Athletic/Activities Director
Stacey Ward, Ferris, Athletic/Activities Director
Dave Hughes, Lewis & Clark, Athletic/Activities Director
Erik Johnson, Salk, Athletic Coordinator
Bruce Hafferkamp, Shadle Park, Activities/Athletic Director
Bryan Schutz, Chase, Athletic Coordinator
Whitney Bowerman, Rogers/Link/Wrestling
Keith Eggleston, Rogers, Athletic Trainer

School Reopening Options

SPS is committed to providing a variety of options to support families and student learning throughout the phases of the COVID-19 pandemic. Safety is our top concern.

School is Closed

Real-Time Distance Learning (See page 9)

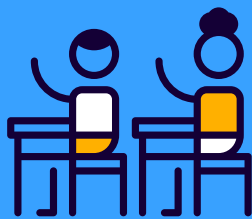


Grades K-12

- Real-time experience with teacher(s)
- A consistent school day schedule (see page 11)
- Identified school start and dismissal times
- Specific times scheduled for each period/subject
- Specialist & elective experiences
- A consistent digital platform – Microsoft Teams

School is Open

In-Person Learning (See page 17)



Grades K-4

- Students attend in person, Monday through Friday
- Daily health screenings, masks and 6-foot distancing

Grades 5-12

- Students attend 2 or 3 times per week on a rotating schedule: M/W or Tu/Th plus every other Friday
- Distance learning on out of school days
- Daily health screenings, masks and 6-foot distancing

Anytime Options

Year-Long Full Distance Learning (See page 22)



Grades K-8

- Spokane Virtual Academy provides daily sessions with classroom teachers and specialists. Curriculum includes online and off-line materials, plus project-based learning activities

Grades 9-12

- Students can sign up for Spokane Virtual Academy for self-paced, instructor-led learning
- 10th-12th graders can attend On Track Academy @ Home for more personalized support, coaching, and social-emotional learning

Plan for when schools are closed: Real-Time Distance Learning

We are ready for back to school 2020 with a plan for all K-12 students to start the year learning from home. Our improved distance learning plan includes:

- Real-time school day with teacher(s)
- Identified school start and dismissal time
- Specific times scheduled for each period/subject
- Blend of live instruction, group work, and independent activities
- Specialist & elective experiences included
- Set times for intervention support and contacting teachers
- Use of Microsoft Teams as the district-wide digital platform
- Laptop check-out for all students
- Limited in person instruction provided for small groups of students

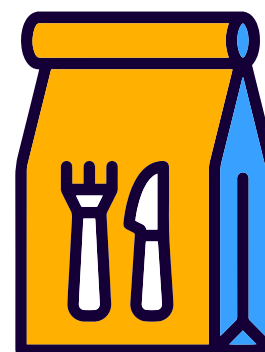


Year-Long Full Distance Learning

Families who don't want their students attending school in-person at any time during the 2020-21 school year can register for a full distance learning option with Spokane Virtual Academy or On Track Academy@Home. Learn more on pages 22-23.

Meals

Any student enrolled in SPS can get a school meal kit each week. Meal kits will be available at cost for paid students and free to students on the free and reduced-price meal program. Multi-day meal kits will be available at most SPS schools, and the district is looking at neighborhood and home delivery options. We are committed to providing nutritious meals for every student every school day no matter where they are learning.



Plan for when schools are closed - continued

Childcare

SPS has developed the following options and resources to offer support.



- **SPS Day Camp:**

We will provide a full day camp for students in grades K-6 for families and staff. This low-cost or scholarship option will be limited to approximately 50 students per site regionally based on available space and family need. Additional sites will open based on registration numbers. Enrollment will be closely managed to provide high levels of social distancing and strict adherence to safety protocols. Students will receive structure and routines that assist them in engaging with their teachers in real-time distance learning. Registration will be available next week at spokaneschools.org/express.

- **SPS Learning Centers:**

In partnership with community organizations, learning centers will be open for 2-3 hour periods for students in grades K-8. This option will offer a supervised location to provide structure, routine, and assistance for distance learning with teachers. Sites will be located throughout district and community spaces to enhance social distancing and accommodate a set number of students at any specific block of time. Information on times and locations will be coming soon.

- **Community-Based Options:**

We are working with community partners to provide a list of community-based childcare options for families. A list of providers will be maintained on the district website.

- **Express Childcare:**

We will continue to provide Express school-age, before and after school day care for students from 6:30 to 8:30 a.m. and 3 to 6 p.m. Please visit spokaneschools.org/express to learn more and register.

Plan for when schools are closed - continued

Sample Elementary Student Day Schedule

	MONDAY	TUESDAY	WEDNESDAY	THURSDAY	FRIDAY
8:30-8:50	Real Time Class Meeting: Social Emotional Learning				
8:50-9:50	Real Time Instructional Block I				
9:50-10:50	Real Time Instructional Block II				
10:50-11:50	Real Time Instructional Block III				
11:50-12:50	LUNCH				
12:50-1:50	Independent Work Time/Play				
1:50-2:30	Real Time Personalized Learning Block/Support and Enrichment				Teacher Prep Time
2:30-3:00	Student and Parent Access Time				

- Real Time Instructional Blocks will include teacher-led instruction on literacy, math, social studies, science, PE, music, art, and technology.

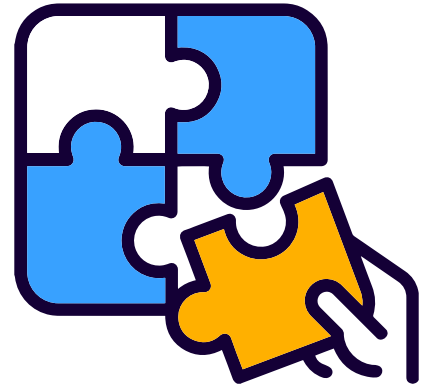
Sample Secondary Student Day Schedule

	MONDAY	TUESDAY	WEDNESDAY	THURSDAY	FRIDAY
8:30 - 8:50	Real Time Advisory (Social-Emotional Learning)				
8:50 - 9:50	Real Time 1st Period	Real Time 4th Period	Real Time 1st Period	Real Time 4th Period	8:50-9:20 1st Pd 9:20-9:50 2nd Pd 9:50-10:20 3rd Pd 10:20-10:50 4th Pd 10:50-11:20 5th Pd 11:20-11:50 6th Pd
9:50 - 10:50	Real Time 2nd Period	Real Time 5th Period	Real Time 2nd Period	Real Time 5th Period	
10:50 - 11:50	Real Time 3rd Period	Real Time 6th Period	Real Time 3rd Period	Real Time 6th Period	
11:50 - 12:50	LUNCH				
12:50 - 1:50	Independent Work Time: Periods 4-6	Independent Work Time: Periods 1-3	Independent Work Time: Periods 4-6	Independent Work Time: Periods 1-3	Independent Work Time: Periods 1-6
1:50-2:30	Real Time Personalized Learning Period/Support and Enrichment				
2:30-3:00	Student and Parent Access Time				

Plan for when schools are closed - continued

Special Education

Spokane Public Schools will provide a continuum of special ed services to meet the individual needs of students and families, prioritizing in-person services when it is safe to do so. SPS will partner with families at the beginning of the year to determine what services are needed to address the impact of COVID on each student's academic and social/emotional wellbeing. Services may need to be adjusted from current IEPs depending on the educational model we are using. Any adjustments will be made in partnership with families.



Examples of additional services available:

Schools are closed to most students	Spokane Virtual Academy: Parent-requested Full Distance Learning
<ul style="list-style-type: none">• Special education teachers provide real-time learning blocks via Microsoft Teams following the school schedule.• Students receive OT, PT, or speech services via consult or teletherapy.• In-person services may be available on a limited basis for students who need face-to-face instruction to make progress.	<ul style="list-style-type: none">• Parents register their student for year-long distance-only learning.• Student attend real-time learning blocks via Microsoft Teams for up to 3 hours a day.• Students will be assigned a special education case manager through the Spokane Virtual Academy program.• Students who are traditionally served in an ABE or MHOH classroom will continue to receive services from their regular teacher via distance learning.

Plan for when schools are closed - continued

English Language Development

Spokane Public Schools will provide English Language Development services to all identified students. Below are examples of additional services :

Schools are closed to most students	Spokane Virtual Academy: Parent-requested Full Distance Learning
<ul style="list-style-type: none">• ELL students in K-6th grade will receive services by the ELD teachers providing real-time learning via Microsoft Teams to students and parents on a weekly basis. The ELD teacher and classroom teacher will collaborate to ensure services are coordinated.• ELL students in 7-12th grade will provide real-time learning blocks via Microsoft Teams following the school schedule.• ELD students in the Middle or High School Newcomer center will be provided with in person ELD services in a small groups not to exceed 3-5 students.• Dual served ELL students in K-12th grade in specialized programs (ABLE, MHOH, DI, BI, Resource, Deaf Ed., Vision, Home Bound, Home Hospital) will receive services weekly via virtual meeting. The amount of time and frequency of services will be outlined in the IEP under Supplemental Aids and Services and the ELD teacher and Classroom/Special Education teacher will collaborate to ensure services are coordinated.	<ul style="list-style-type: none">• Parents register their student for distance only learning.• ELL students in K-12th grade will receive services by the ELD teachers providing real-time learning via Microsoft Teams to students and parents on a weekly basis.



Plan for when schools are closed - continued

Technology Support and Access

- A laptop computer will be checked out to every SPS student for use during the school year while at school. Parents may provide approval via [Laptop Checkout form](#) for students to take devices home.
- **Wireless internet access** is available for students and staff in the parking lots of several schools. Limited amounts of hotspots will be available for checkout.
- Staff professional development will be available with a focus on blended learning and Microsoft Teams, our tool for learning management including virtual class meetings, communication and announcements, curriculum content management, and assignments.
- Resources will be publicly available for students and parents to learn more about the core applications that will be used such as Clever, Microsoft Teams, and curricular resources on our [Learning at Home](#) page.
- **Family Support Resources** will be available with videos, guides and scheduled drop-in live sessions.



Plan for when schools are closed - continued

Social Emotional Health

Schools create the best learning environments by promoting healthy interactions among students and staff, and teaching social, emotional, and self-regulation skills. Teachers, staff, and administrators will support a social emotional learning environment by enhancing previously existing relationships with students and families, as well as:

- Establishing a routine and maintaining clear communication
- Empathizing with the difficulties resulting from routines that have already changed due to current events
- Explaining that there will likely be future changes to routines, which will be communicated ahead of time when it is possible to do so
- Providing information in digestible amounts, and encouraging students to ask clarifying questions.
- Encouraging students to lead the way in sharing what they do and do not understand about their current situation. This is done by asking open-ended questions, such as, “How are you feeling about not being in school?”

Now, more than ever, students should feel valued and welcomed regardless of their backgrounds or identities. Routines, both new and existing, are key for positive Social Emotional Health for students. Participating in these routines helps educators build and maintain connections despite their physical distance from their students.



Together we can...

Plan for when schools are closed - continued

Extracurricular and Activities

Extracurricular sports and activities are governed in Washington by the ***Washington Interscholastic Activities Association*** (WIAA). To ensure safety for students, the WIAA has modified the 2020-21 calendar to create four WIAA-sanctioned seasons as follows:



- Season 1: (Sept. 7-Oct. 31 – Designated as an alternate season for low-risk sports) District 8/Greater Spokane League (GSL) has opted not to use an alternate schedule and will only participate in Seasons 2, 3, and 4.
- Season 2: (Dec. 28-Feb. 27) Basketball (Boys and Girls), Gymnastics, Wrestling
- Season 3: (March 1-May 1) Volleyball, Competitive Cheerleading, Cross Country (Boys and Girls), Slowpitch Softball, Girls Soccer, Football (Feb. 17-May 8)
- Season 4: (April 26-June 26) Golf (Boys and Girls), Tennis (Boys and Girls), Fastpitch Softball, Track & Field (Boys and Girls), Baseball, Competitive Dance/Drill, Boys Soccer

The WIAA is working with Drama and Debate organizations to develop a season schedule. Debate is working on creating a virtual season.

The WIAA has also established a possible out-of-season coaching period from Sep. 28-Nov. 30. This window would mimic the traditional summer coaching window sanctioned by the WIAA and would follow current Washington Phasing guidelines for gatherings, safety protocols, and district approval based on current distance learning models.

Protocols and Guidelines for Athletics will include:

- Training for Coaches/Advisors around Safety/Cleaning
- Physical Distancing
- Health Screenings
- Personal Hygiene
- Face Coverings
- Equipment
- Facilities & Cleaning
- Transportation

[View the Athletic Fall Reopening Plan](#)

Note: A Middle School Athletics calendar will be released at a later date. Elementary activities are to be determined.

Plan for when schools are open

Health and Safety Requirements

The health and safety of students, staff, and visitors is our highest priority. To comply with local, state, and national health department guidance, SPS will implement the following health and safety requirements:

Face coverings:

- Everyone in school district facilities and on school busses, including staff, will be required to wear a face covering.
- Parents and guardians should provide children with cloth face coverings.
- For those who forget their own, disposable masks will be provided at building entrances.
- Face shields will be provided to instructional staff to wear while teaching 6 feet from students, and for certain students who cannot wear a mask.



Note: Students will be provided opportunities throughout the school day to take breaks outside where masks can be removed when staying 6 feet apart from others, supervised by staff.

Daily health screenings:

- Families and staff will be required to do a daily health screening. An app will be available to walk them through required health screening questions. Information will then be sent to school offices to verify that students and staff can attend school and to allow follow-up on health concerns. Anyone who reports being ill or having a temperature over 100.4 degrees will be asked to stay home.
- Students and staff who do not complete the daily health screening prior to start of school/workday will be asked to report to the office for screening.



Hygiene practices:

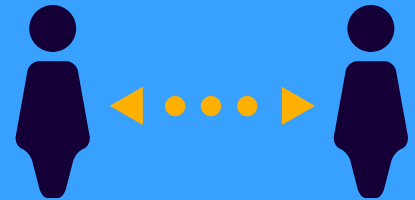
- Staff and students will be encouraged to wash their hands frequently, including at the start of the school day, before lunch, after recess, after using the restroom, and at the end of the school day prior to leaving.
- Sanitization stations will be available throughout each school: at school entrances, in office areas, classrooms and other locations for use by visitors and staff. School staff will supervise student use of hand sanitizer.



Plan for when schools are open - continued

Physical distancing:

- Classrooms will be arranged to have students sitting 6 feet apart.
- Social distancing will be required with floor signage markers placed in all areas where students, staff, and the general public may need to wait in a line for services (e.g., the office, school entry, lunch line, bus line, restrooms, exterior doors from outdoor activities, etc.).
- Plexiglass barriers will be installed in areas where social distancing is not possible such as the school office, student office, and in other needed areas.



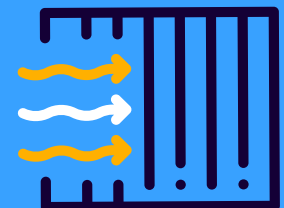
Cleaning and disinfection:

- Every classroom will be equipped with a cleaning caddy containing cleaning and sanitation supplies.
- At the elementary level, student desks will be cleaned and disinfected at least once per day.
- At the secondary level, desks will be cleaned and disinfected between student uses.
- High touch areas such as counters, doorknobs, handrails, doors and entryways, sink faucet handles, drinking fountains, light switches, pencil sharpeners, etc. will be cleaned and disinfected frequently.
- PE equipment will be cleaned and sanitized between all student use. Students will use equipment specific to them and it will be cleaned/sanitized with indicated disinfectant each time before future use and/or stored for over 5 days before additional use by other students.



Ventilation:

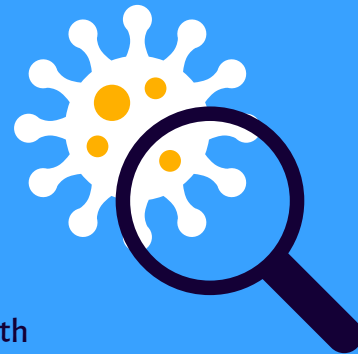
In accordance with health department recommendations and COVID mitigation measures, SPS has increased air exchange durations and rates to provide improved nightly flush and better daytime air quality. We plan to continuously monitor schools' ventilation systems throughout the year to ensure classrooms are getting enough fresh air.



Plan for when schools are open - continued

Showing signs of COVID-19 at school:

- If someone develops symptoms while at school they will be separated from others, asked to keep a mask on, and sent home. The area where the symptomatic person waited will be aired out, cleaned and disinfected after they leave.
- Each school will have a designated area where sick students can be separated until they can be picked up by an authorized person.
- The person with symptoms should follow Department of Health guidance for what to do if you have symptoms for COVID-19 and have not been around anyone who has been diagnosed with COVID-19. If a student or staff member is diagnosed with COVID-19, their family should notify the school.
- The local health authority will advise the district on next steps, and it is likely that many of the other students or staff who were in close contact with the infected individual will need to self quarantine for 14 days.



Returning to school after having suspected signs of COVID-19:

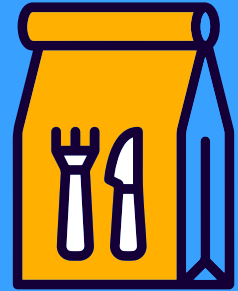
A staff member or student who had signs of suspected or confirmed COVID-19 can return to school when:

- At least three days (72 hours) have passed since recovery – defined as no fever without the use of medications and improvement in respiratory signs like cough and shortness of breath; **AND**
- At least 10 days have passed since signs first showed up. **OR**
- It has been at least three days (72 hours) since recovery **AND** a health care provider has certified that the student does not have suspected or confirmed COVID-19.
- If a person believes they have had close contact to someone with COVID-19, but they are not sick, they should watch their health for signs of fever, cough, shortness of breath, and other COVID-19 symptoms during the 14 days after the last day they were in close contact with the person sick with COVID-19. They should not go to work, child care, school, or public places for 14 days.

Plan for when schools are open - continued

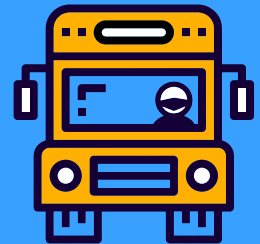
Meals

- Students may bring food for their personal consumption or participate in the school meal program.
- Hot and cold bagged meals will be provided to elementary students to eat in their classroom, supervised by their teacher. Secondary schools will have the option of eating in the cafeteria (6 feet apart), in classrooms, in hallways, or a combination of all three, supervised by staff.
- No sharing of outside food items is allowed during school hours.
- Meal funds must be deposited prior to meal time to improve line service speed and keep students and staff safe.
 - ▶ No cash or checks will be accepted in serving lines. Deposit money online through **My School Bucks** or at the school office.



Transportation

- Face coverings must be worn by everyone riding the bus. Bus drivers will be equipped with extra disposable masks for students who don't have masks.
- Students will sit two per seat, or one student per seat, if feasible.
- Busses will be thoroughly cleaned before the first run of the day, mid-day, and prior to activity runs.
- Windows will be kept open as much as possible to increase air flow.



Child Care

SPS will offer its before and after school Express childcare program when schools are open. And, for families and staff with 5th and 6th grade students, the Express program will offer a 7 hour per day learning lab to assist students on the day they are not in school on the alternating schedule. Information about the program and costs is available at spokaneschools.org/express or by emailing expressbilling@spokaneschools.org



Plan for when schools are open - continued

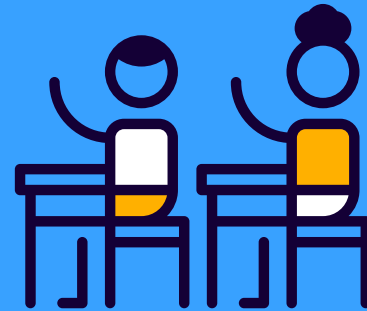
Learning Plans

In-Person Learning

To provide adequate spacing and class sizes that meet safety guidelines:

Grades K-4

- Grades K-4 will attend school every day of the week because it is more difficult for younger students to engage in distance learning compared to older students, and it will lessen the burden for our local child care facilities. Classes will be limited to about 20 students. Regular outdoor time will be part of the school day.



Grades 5-12

- Students in grades 5-12 will have an A/B alternating day schedule 2 or 3 days each week with online learning activities when not at school and time set aside for virtual support.
GROUP A: Goes to school Monday and Wednesday
GROUP B: Goes to school Tuesday and Thursday
- Each group alternates going to school on Friday
- Class sizes are designed for 6-foot social distancing. During in-school days, students will receive detailed instructions about what to work on and how to spend their distance learning day. When they return to the classroom, teachers will review and answer questions.
- Students will use a consistent digital platform – Microsoft Teams.
- Afterschool activities provided when possible.
- Option schools will communicate their school or program's learning model

Plan for when schools are open - continued

Year-Long Full Distance Learning Options

Families who do not want their students attending school in person at any time during the 2020-21 school year can register for a full distance learning option with Spokane Virtual Academy or On Track Academy @ Home. For students who may want to return to in-person learning, accommodations will be made providing there is space available.



- **Spokane Virtual Academy for grades K-8:** Self-paced and paced opportunities, with curriculum that includes online and off-line materials, plus project learning activities. Orientations for parents and students will be scheduled multiple times during the start of the school year and second semester, to include an overview of student expectations and technical training for use of the assigned programs. Checkout of laptops, workbooks, and textbooks will be done by the student's home school. Spokane Virtual Academy will provide:
 - ▶ Regularly scheduled interaction with teachers and other students to build a learning community
 - ▶ Self-paced learning with a teacher check-in schedule that works best for the family
 - ▶ Specific times for classroom, specialist, and support sessions based on student needs and family preference
 - ▶ A blend of live instruction, group work, and independent activities
 - ▶ Elementary specialist & middle school elective experiences
 - ▶ Intervention support and teacher office hours
 - ▶ Use of Microsoft Teams as the district-wide digital platform and Blackboard

Monthly technical support sessions will be available for parents who would like a deeper dive into online programs and reporting. Monthly intervention sessions will be required for students who are falling behind to reboot learning, refresh expectations, and answer questions.

- **Spokane Virtual Academy for 9th-12th graders:** Students sign up for Spokane Virtual Learning courses for self-paced, instructor-led learning in full distance learning format. Students who are full-time SVL will be scheduled in daily Spokane Virtual Academy support sessions. Monthly intervention sessions will be required for students who are falling behind to reboot learning, refresh student expectations, and answer questions. Laptops will be checked out for all students.

Plan for when schools are open - continued

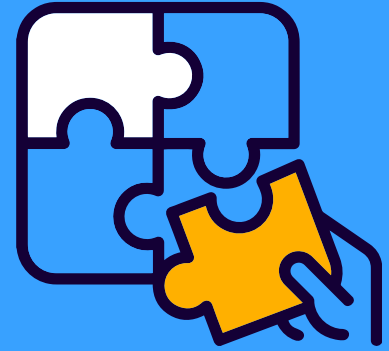
- **On Track Academy@Home for 10th-12th graders:** Students can apply to choice into this program. Relationship oriented, personalized and competency-based, On Track@Home partners with parents/caregivers to build success for each student. Teacher/Advisors are accessible, compassionate and dedicated to each student and will provide consistent progress monitoring and support to each student and family. On Track@Home will provide:
 - ▶ Individual student learning plans guided by weekly schedules and teacher meetings
 - ▶ Personalized support, coaching, and social-emotional learning
 - ▶ Ability to attend for 1st semester, 2nd semester, or both. Students may return to their sending high school at semester if desired, or they can continue with On Track @Home
 - ▶ Access to individual coaching, guidance, instructional support, and social-emotional learning scheduled weekly through virtual/phone or face-to-face meetings with teacher/advisor at least once a week
 - ▶ Coursework through Blackboard, textbooks (online and physical), packets/handouts/workbooks, specific designed assignments/assessments/projects, online educational resources (video instruction, practice work) for up to 3 hours per day (30 min per class)
 - ▶ A laptop to check out



Plan for when schools are open - continued

Special Education

Spokane Public Schools will provide a continuum of special ed services to meet the individual needs of students and families, prioritizing in-person services when it is safe to do so. SPS will partner with families at the beginning of the year to determine what services are needed to address the impact of COVID on each student's academic and social/emotional wellbeing. Services may need to be adjusted from current IEPs depending on the educational model we are using. Any adjustments will be made in partnership with families.



Examples of additional services:

School is Open	Spokane Virtual Academy: Parent-requested distance learning
<ul style="list-style-type: none">• Preschool students will attend 2 days a week from 8:30 a.m. -1:30 p.m.• All students in a specialized program (ABLE, MHOH, DI, BI) will have the option to attend 5 days a week.• Elementary Deaf Ed and Vision will attend 5 days a week.• 5th and 6th graders who access the resource room may attend 5 days a week as determined by the IEP team.• 7th through 12th graders who access resource services may attend in-person tutoring on their distance day.• Students receive related services such as OT, PT, and speech in-person, or via teletherapy.	<ul style="list-style-type: none">• Parents register their student for distance-only learning.• Student attend real-time learning blocks via Microsoft Teams for up to 3 hours a day.• Students will be assigned a special education case manager through the Spokane Virtual Academy program.• Students who are traditionally served in an ABLE or MHOH classroom will continue to receive services from their regular teacher via distance learning.

Plan for when schools are open - continued

English Language Development

SPS will provide English Language Development services to all identified students.

Examples of additional services:



School is Open	Spokane Virtual Academy: Parent-requested distance learning
<ul style="list-style-type: none">• ELL students in K-6th grade will attend 5 days a week and receive services in a push-in or pull-out model.• ELL students in 7-12th grade will follow the secondary A/B schedule with the option for in-person tutoring on 'digital days', pending staffing.• ELL students in the Middle or High School Newcomer center will be given the opportunity to attend school every day. Students will work on their assigned distance learning curriculum while attending on their "off" day.• Dual served ELL students in K-6th grade in specialized programs (ABLE, MHOH, DI, BI, Resource, Deaf Ed., Vision, Home Bound, Home Hospital) will receive services in a push-in or pull-out model.• Dual served ELL students in 7-12th grade in specialized programs (ABLE, MHOH, DI, BI, Resource, Deaf Ed., Vision, Home Bound, Home Hospital) will receive services weekly via virtual meeting.	<ul style="list-style-type: none">• Parents register their student for distance only learning.• ELL students in K-12th grade will receive services by the ELD teachers providing real-time learning via Microsoft Teams to students and parents on a weekly basis



Additional Resources

[*Questions and Answers about SPS Reopening Plan*](#)

[*Washington State Superintendent of Public Instruction School Reopening Planning Guide*](#)

[*OSPI Reopening Washington Schools 2020: Special Education Guidance*](#)

[*Talking to your children about school closures*](#)

[*Tips for helping kids wear face masks*](#)

[*Washington State Department of Health School Reopening Models During COVID-19 Pandemic*](#)

[*Washington State Department of Health Decision-Tree to Reopen Schools for In-Person Learning*](#)



Together we can...



For more information visit
spokaneschools.org/BacktoSchool2020

Spokane Public Schools complies with all federal and state rules and regulations and does not discriminate on the basis of age, sex, marital status, race, color, creed, religion, national origin, the presence of any sensory, mental, or physical disability, or the use of a trained dog guide or service animal by a person with a disability, sexual orientation including gender expression or gender identity, or honorably discharged veteran or military status. This holds true for all students who are interested in participating in educational programs and/or extracurricular school activities, and provides equal access to the Boy Scouts and other designated youth groups. Inquiries regarding compliance and/or grievance procedures may be directed to the school district's officers listed on our website at www.spokaneschools.org/nondiscrimination.

Together we can...