

- 
- To take the PSAT you need a laptop that will allow you to access the internet.
  - See Mrs. Hanson if you don't have a laptop, or your laptop has technical issues.



# Digital Readiness Check Guide

---

You'll complete these steps today:

- Install Blue Book
- Sign into Blue Book
- Test your Device
- Test Preview



- Check to make sure that you have the BlueBook test app.
- Here's what the icon looks like. You should see it on your desktop.



- If you have the icon for BlueBook, click on the icon and it will update to the newest version.



# Install Bluebook

- If you don't have the icon on your desktop you need to download the app.
- Here's the link to College Board's site:  
<https://bluebook.app.collegeboard.org>



# Install Blue Book

---

Click on the  
**Download for  
Windows link.**

# Download Bluebook

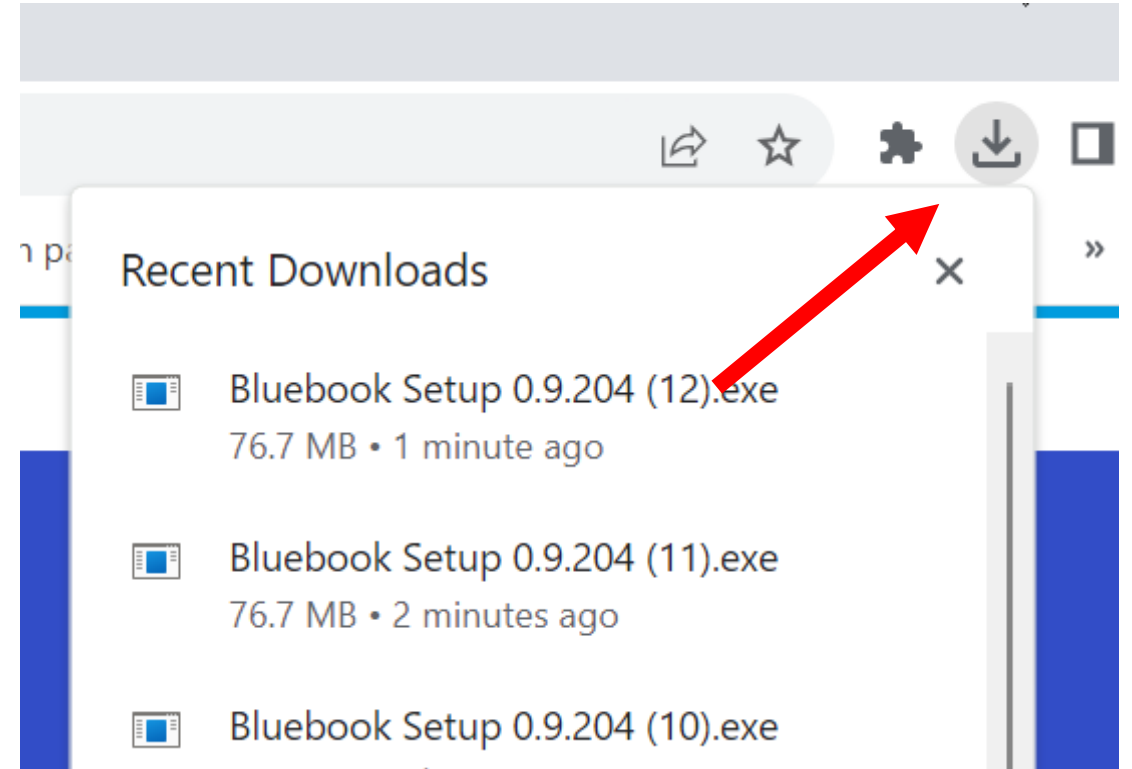
Windows 10 or later and 250 MB of available

with a school-managed device and you can't c  
d, reach out to someone at your school for h

 [Download for Windows](#)

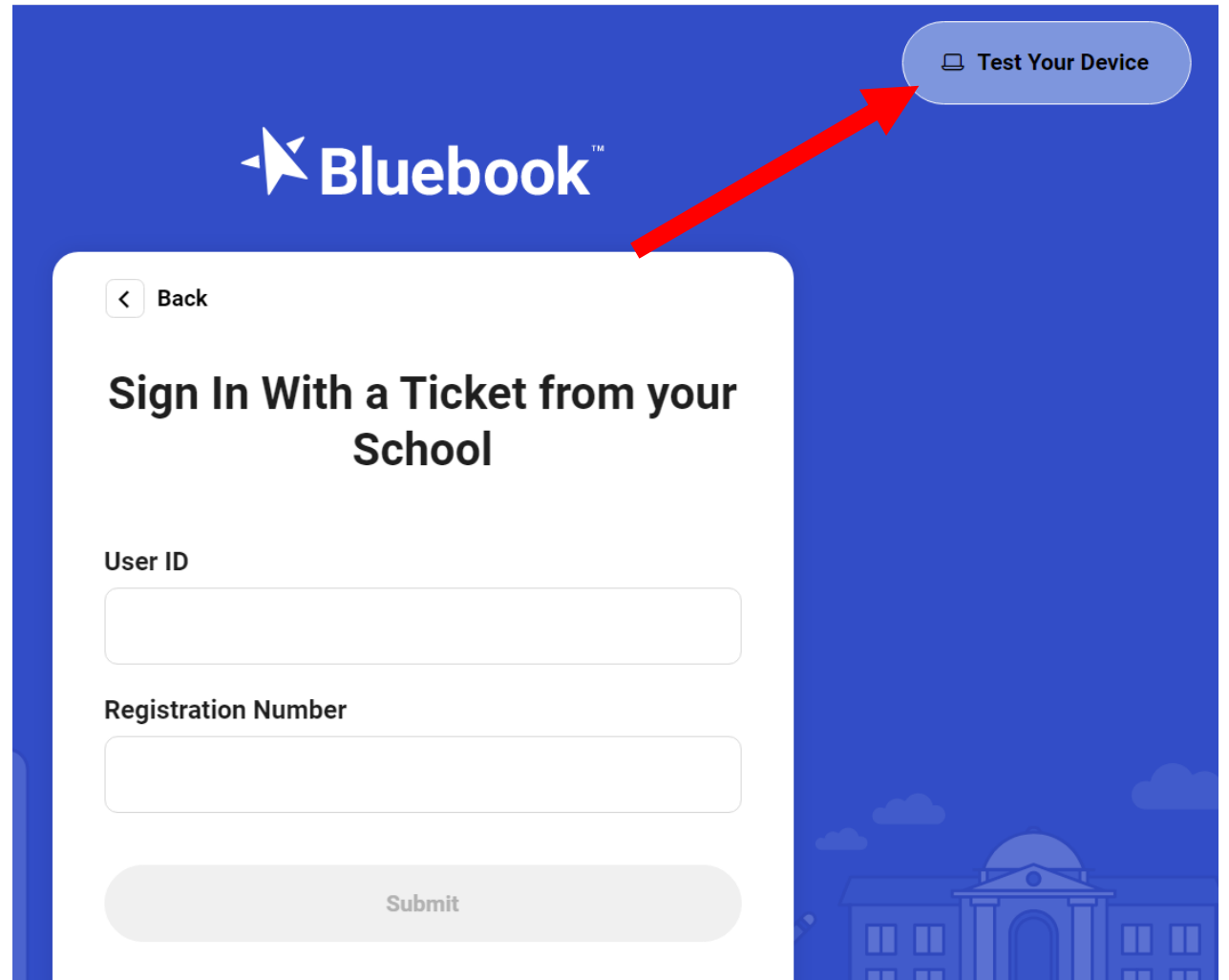
# Install Blue Book

- Click on the downloads arrow in the URH corner.
- I downloaded too many files here. You only need one.
- Click on the Blue Book setup file and it will open and install.



# Test Your Device

Click on **Test Your Device**

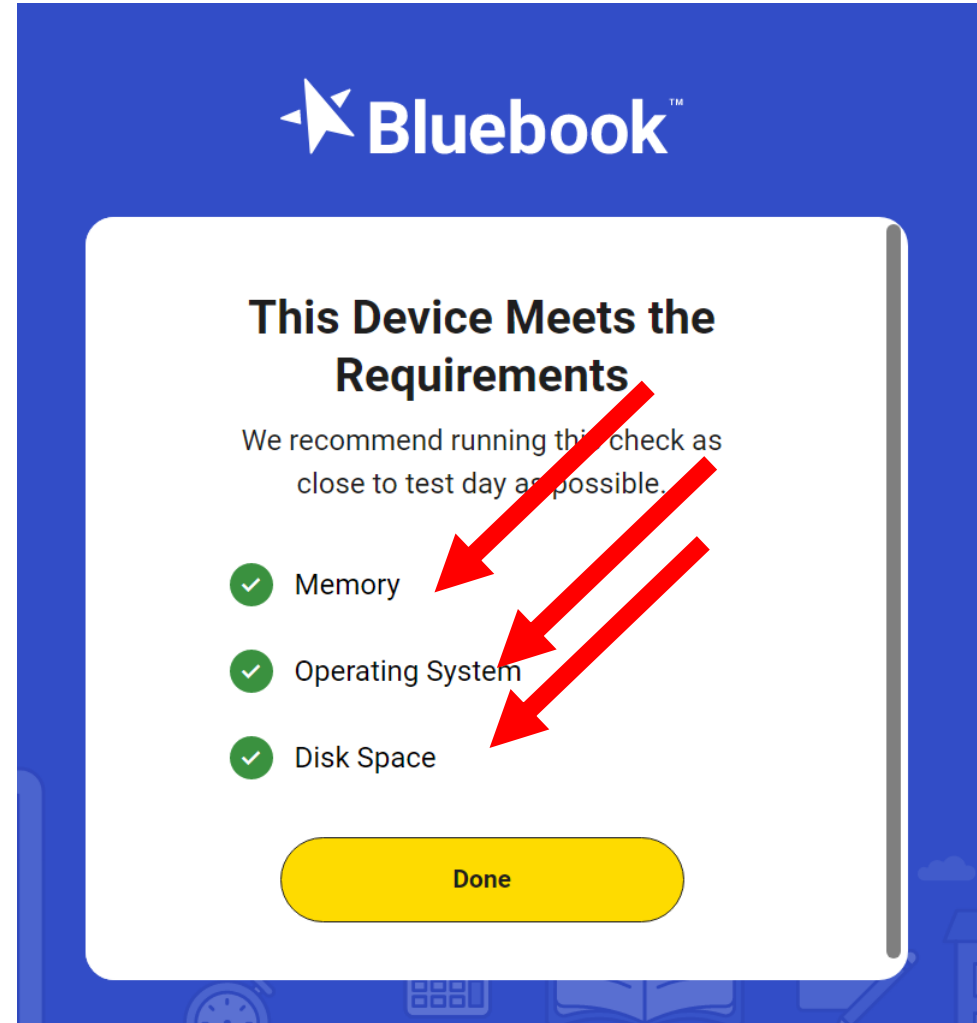


The image shows a mobile application interface for Bluebook. At the top, the Bluebook logo is displayed in white on a blue background. In the top right corner, there is a button labeled "Test Your Device" with a document icon. A red arrow points to this button. Below the logo, there is a white card with a "Back" button (indicated by a left arrow) in the top left corner. The main heading on the card is "Sign In With a Ticket from your School". Below this heading are two input fields: "User ID" and "Registration Number". At the bottom of the card is a "Submit" button. The background of the app is blue with a faint illustration of a school building at the bottom right.



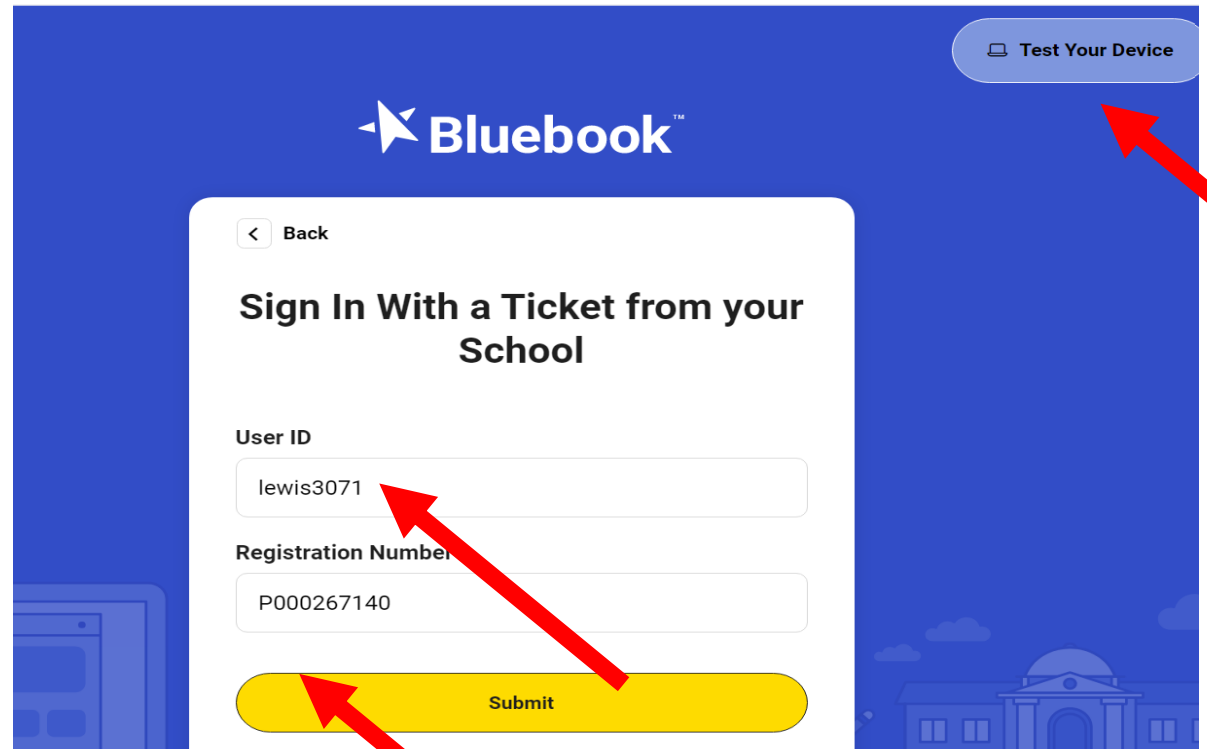
# Test Your Device

- Blue book will quickly check that your device meets all requirements.
- Let Mrs. Hanson know if one of the requirements isn't checked.



# Sign Into **Blue Book**

- Enter the **User ID** and **Registration Number** from your test ticket.
- Click on **Test Your Device**.



The screenshot shows the Bluebook mobile app interface. At the top right, there is a button labeled "Test Your Device" with a device icon. The main content area is a white card with a "Back" button at the top left. The title of the card is "Sign In With a Ticket from your School". Below the title, there are two input fields: "User ID" containing the text "lewis3071" and "Registration Number" containing the text "P000267140". At the bottom of the card is a yellow "Submit" button. Red arrows point from the right side of the image to the "Test Your Device" button, the "Submit" button, and the "User ID" input field.

# Exam Set Up

- Don't click on **Exam Set Up** today.
- You'll do that before you take the PSAT on October 25.

---

## NMSQT Fall 2023

Your teacher will let you know your test date

[▶ Exam Overview](#)

[✓ Test Day Checklist](#)

### Park High School

Ash St

Seaside, WA 99205-1411, US

### Accommodations:

:

---

Check-in is incomplete.

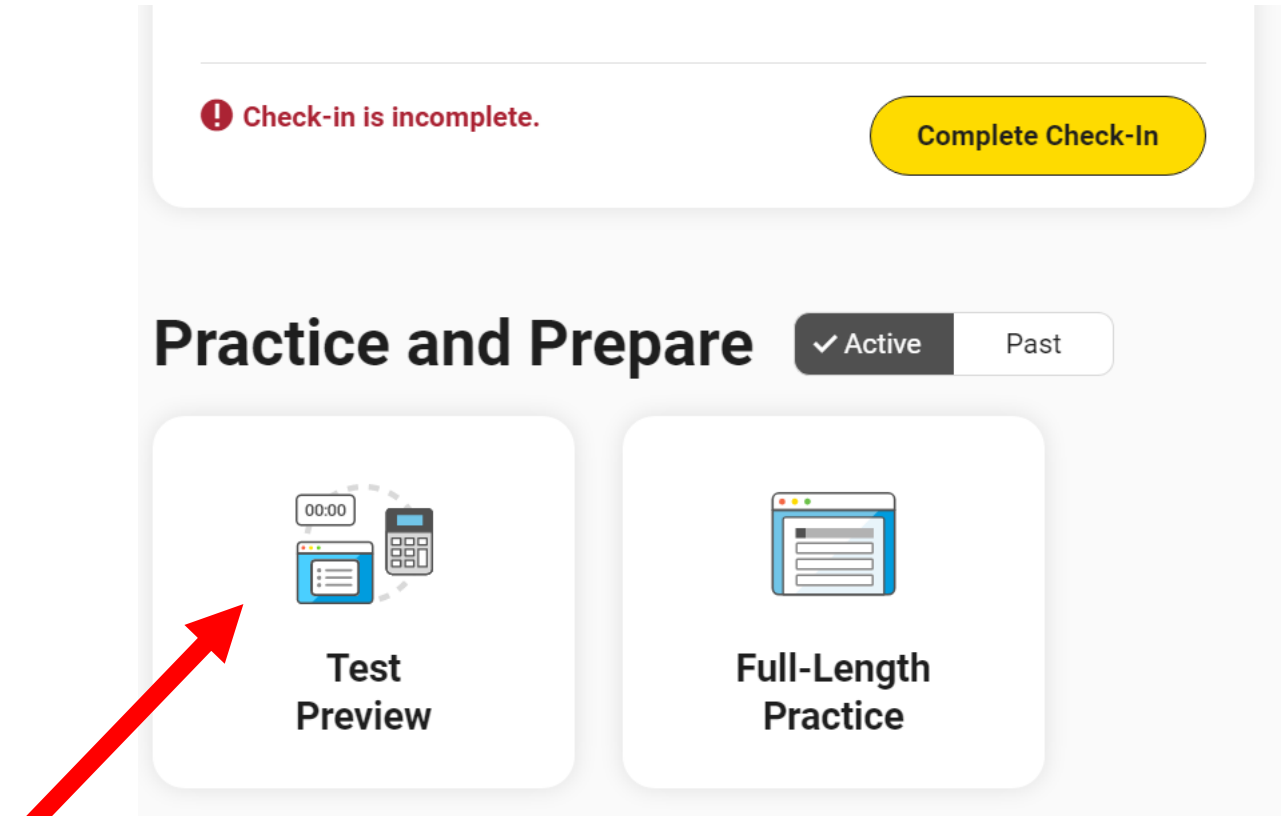
[Complete Check-In](#)




# Test Preview

The test preview is a short set of questions that students can go through to get a sense of how testing works in Bluebook.

Test preview is optional.





The Digital Readiness check  
is complete once you have:

---

- Installed Blue Book
- Signed into Blue Book
- Tested your device