

WELCOME STUDENTS AND FAMILIES

For our presentation this evening, we ask that you adhere to the following protocols:

- Please keep your microphone muted during the presentation.
- Enter questions in the Chat as you have them. We will answer them during or at the end of the presentation.
- We will have time at the end of the presentation for questions not asked or answered during the presentation.

Thank you. Our meeting will begin shortly.





Providence Nursing Pathway Career Launch Program

Home and Community Care





Spokane Public Schools
excellence for everyone



Community Colleges of Spokane
Spokane Community College



Program Description & Partners

Providence, Spokane Public Schools, Community Colleges of Spokane, and WA Alliance for Better Schools are partnering to offer an opportunity to fast-track into a career as a Certified Nursing Assistant (CNA) at Providence St. Joseph Care Center, while continuing an education to become a Registered Nurse. CNA courses provided by Sparrow Healthcare Education.

Our Team of Presenters

Robert Reavis, CTE Director, Spokane Public Schools

Guillermo Espinosa, Associate Dean of K-12 Partnerships & Outreach, Spokane Community College

Megan Stewart, Nurse Manager for TCU, Providence St. Joseph Care Center

Kate DeSouse, Nursing Educator, Providence St. Joseph Care Center

Michael Rackham, Administrator, Providence St. Joseph Care Center

Ken Koester, Director of Nursing, Providence St. Joseph Care Center

Christina Castorena, Sr Project Manager Washington Alliance for Better Schools (WABS)

STUDENT



Career Pathways

There are many different ways to attain a career and be competitive against others interviewing for the same job. Some of these pathways include:

4-Year degrees

2-Year degrees

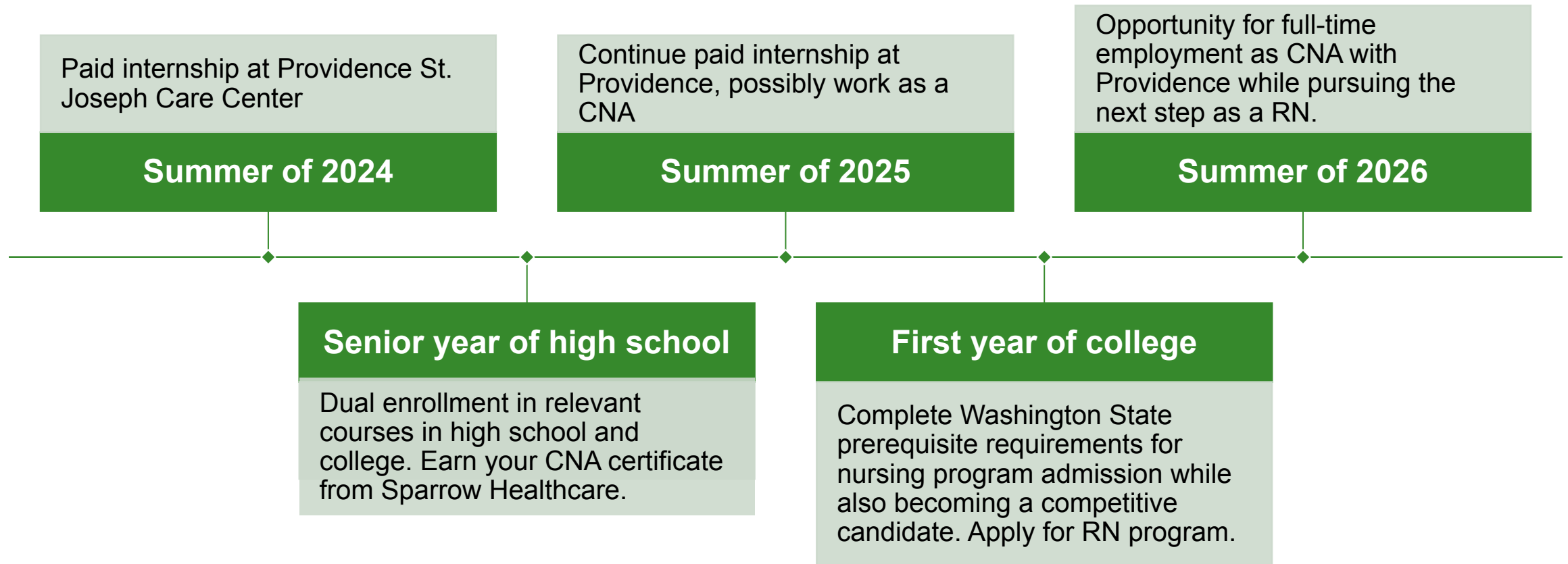
Certificates

Apprenticeships

Career Launch Programs



Full Program Overview: Required Steps of 2-year Program



What is a career as a nurse in healthcare?



30 million nursing jobs
only 61% of nurses work
in a hospital!



Diverse opportunities
multiple career paths as a
nurse in multiple nursing
fields



**Rewarding and
respected career**



**Many opportunities for
growth throughout
career**

Providence Home and Community Care: who we are

As part of a larger system, **Providence Home and Community Care** offers a comprehensive array of services for all ages. We are committed to helping patients get the most out of life.



8000 Caregivers



2600 Volunteers



30k+ people in our care



190k+ lives served

Population Health Competencies



Long-term / Longitudinal Care

Patient-focused engagement over time allows us many diverse opportunities to develop meaningful relationship and support care plans.



Restorative Care

Episodic or bundled clinical care that enables patients to transition home and/or to thrive through medical events



Care through End of Life

Supporting clinical, social/emotional, and spiritual needs of patients and loved ones for the best possible care through end of life.

Service-Lines

Assisted Living

A broad range of services to enable the elderly and people with disabilities to live as independently as possible.

Home Health

Quality health care provided in the comfort of home.

Hospice and Palliative Care

Specialized care for those with life-limiting illnesses.

Personal Home Care

Personalized non-medical care and support at home.

Program Of All-Inclusive Care for the Elderly (PACE)

Comprehensive health care and social services to help the elderly remain healthy and independent for as long as possible, including activities and classes to support the physical, mental, emotional and spiritual needs of seniors.

Home Medical Equipment

Supplies and equipment to help patients stay comfortable at home.

Infusion and Pharmacy

Pharmaceutical and nutrition services in the patient's home or in an ambulatory infusion suite.

Skilled Nursing/Rehabilitation

Short-term rehabilitation following hospitalization before returning home and skilled care and assistance with daily activities in a warm, caring community for those with chronic and/or disabling conditions.

Supportive Housing

Safe, affordable, independent living facilities for people with low-incomes and adults with disabilities in Washington, Oregon and California.

Providence St. Joseph Care Center Spokane, WA

Mission: *As expressions of God's healing love through the ministry of Jesus, we are steadfast in serving all especially the poor and the vulnerable.*

Values: *Compassion, Dignity, Justice, Excellence, Integrity*

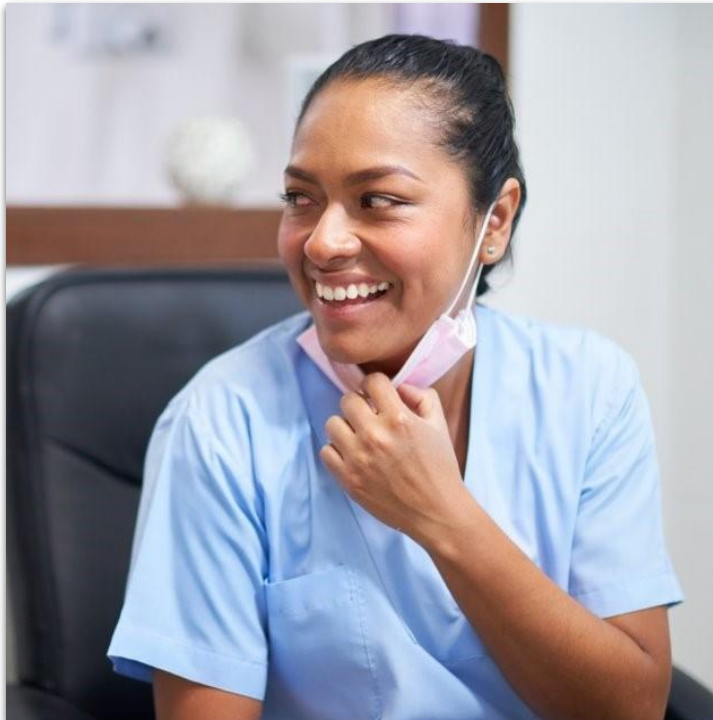
Renovated in 2016, Providence St. Joseph Center, located in Spokane, WA is a Skilled Nursing Facility and Transitional Care Unit. Providence St. Joseph Care Center provides a home and an extended family to our vulnerable elder residents who are no longer able to care for themselves and/or not able to afford to live independently at home or in other care settings. We also offer person-centered skilled nursing and rehabilitation services to patients needing transitional stay to safely integrate themselves back to the community.



Our Facility



Providence Paid Internship Experience



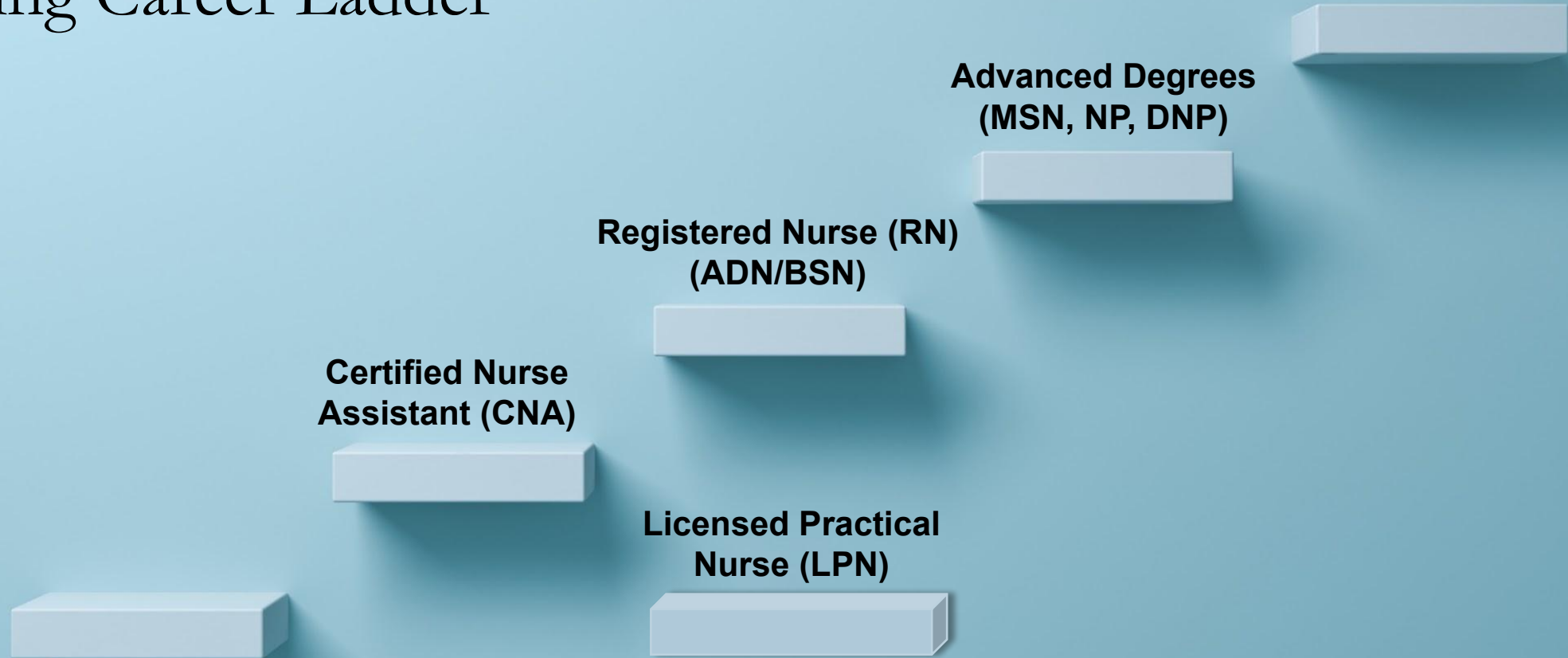
6 week paid internship at Providence St. Joseph Care Center

40 hours per week

Start date: July 2024

- Exposure to multiple different roles within healthcare
- Leadership experiences
- Assigned to experienced preceptors
- Understand the potential growth opportunities in the healthcare field

Nursing Career Ladder



Program Eligibility and Overview

Program Eligibility

- Must be a current high school junior (grade 11) in Spokane Public Schools
- Must be interested in fast tracking with a Career Launch program that includes worksite learning in internships and earning a college certificate
- Must be interested in entering the workforce upon completion of the 2-Year program



Spokane Community College

How do you get started with Running Start?

What classes would students take each quarter as Seniors while in Running Start?

What type of classes would they take once they are full time?

What supports will students have while enrolled?

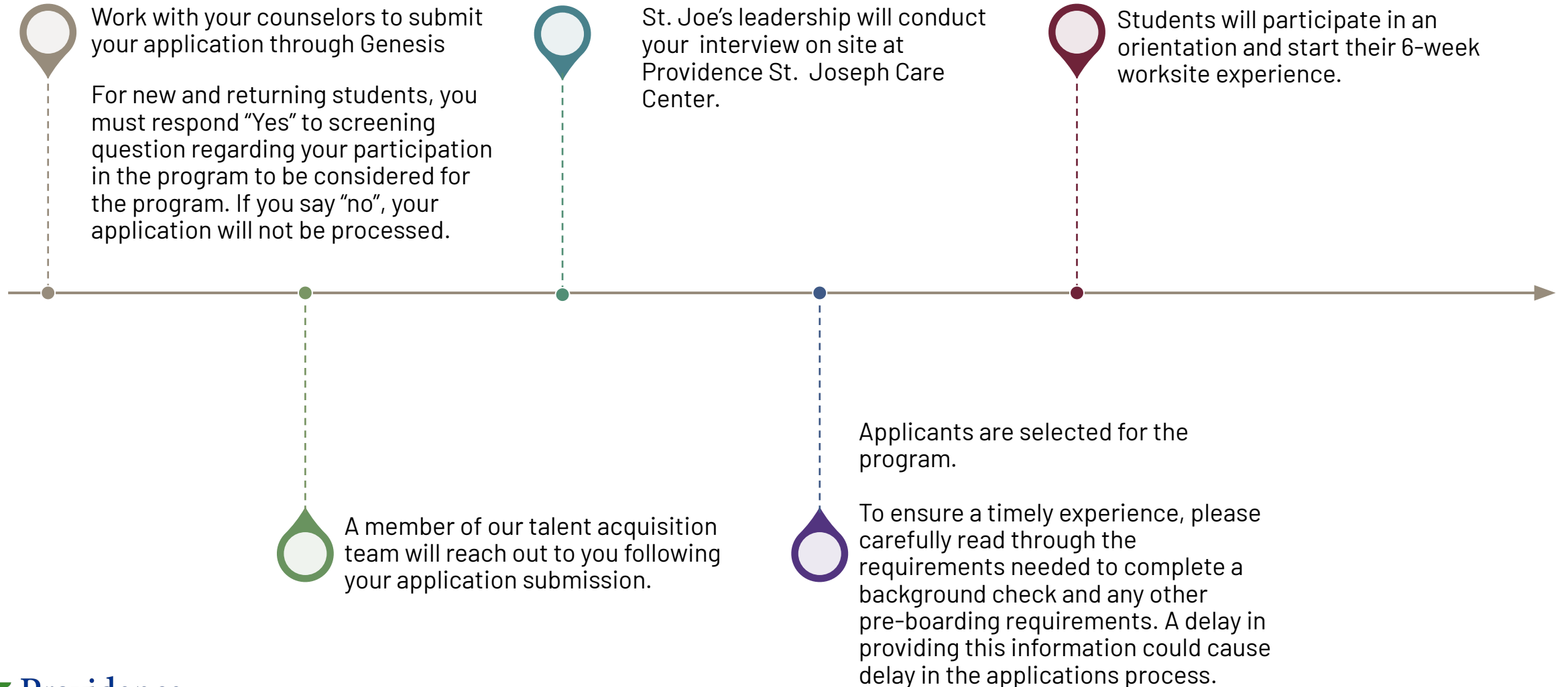
Application Timeline, Elements and Support

Online Application

- Online application opens April 1st and closes on May 19th
- Application links will be available on the Spokane Public School District website and will be sent via email for zoom registrants
- Submit a resume on the application portal



What happens after you apply



Uploading a Current Resume

- Resume can be any format you choose and should include:
 - Your name and contact information (phone number and email address)
 - Your skills and strengths
 - Your work and/or volunteer experience
 - Relevant classes you have taken
 - Honors and awards you have received
- Submitting with your application is preferred but you may also wait and submit a resume once you have been chosen.
- Upload in PDF file format
- If you need assistance with completing your resume schedule an appointment with the CCR, College and Career Ready, Counselor in the Career Center of your high school.

Identifying Counselor Or Teacher For Letter Of Recommendation

You will be required to have a teacher or counselor submit a Letter of Recommendation which speaks to your qualifications and character as a potential candidate for this program.

In your application, you will provide the name and email address of the teacher or counselor who be submitting this letter as a reference on your behalf.

Upon completion of your application, the teacher or counselor identified will be contacted by email with information on how and where to submit their letter. Their letter of recommendation will be sent directly to Providence St. Joseph Care Center and not to you.

Important: Discuss with the person you wish to write your letter before submitting their name as part of your application.



Support staff to assist you if needed

Function	Contact	For assistance with...
High School Counselors/College & Career Specialists	Visit your HS Career Center	Resume development assistance/Running Start questions and enrollment
Worksite Learning Credit	Terry Yeigh terryY@spokaneschools.org	Academic credit for worksite learning during the school year
Running Start Coordination	Guillermo Espinosa guillermo.espinosa@scc.spokane.edu	Running start questions and enrollment
Providence St Joseph Team	Megan Stewart megan.stewart@providence.org Ken Koester kenneth.koester@providence.org	Program questions or questions about Providence St Joseph
Providence Talent Acquisition	Gary Key gary.key@providence.org	Questions about the online application process

QUESTIONS