

Spokane Public Schools  
Annual Performance Report  
for  
Pride Prep Charter School  
School Year 2016/2017



# ANNUAL PERFORMANCE REPORT FOR **PRIDE PREP CHARTER SCHOOL**

## **Introduction**

Every year, Spokane Public Schools produces an Annual Performance Report for each charter school it oversees, for use by the school and other stakeholders. The report summarizes the school's academic performance, organizational performance (including legal compliance), and financial health and sustainability, according to the most recent data available for the year in review. The Annual Performance Report also provides an overview of the charter school's enrollment demographics for the year reviewed.

Spokane Public Schools is committed to promoting high-quality education for public school students in Spokane. This Annual Performance Report is produced in order to:

- Provide timely information to the charter school on its performance relative to the standards and expectations established by applicable federal and state law and the charter contract.
- Provide information that enables the community and the public to understand the school's performance, including its fulfillment of public obligations.

This report is based on the 2016/2017 school year. With the Washington state court ruling in September 2015, each of Spokane's charter schools operated much of the 2015/2016 school year under the structure of Alternative Learning Experience (ALE) Schools, overseen by the Mary Walker School District. It is generally accepted that the 2016/2017 school year was the first full year schools were operating as charter schools, thus the first annual performance report is based on that year.

At the time of this report, performance and accountability audits conducted by the State Auditor's Office are not yet completed, although the independent financial audit is. Additionally, statewide three-year academic index data is also not available as the schools do not yet have three years of data.

PRIDE PREP CHARTER SCHOOL  
 PERFORMANCE SUMMARY  
 2016-17

For each measure in this report, the school receives one of the ratings described below:

<i>RATING</i>	<i>DESCRIPTION</i>
Meets Standard	The school is performing well and meeting expectations for performance.
Does Not Meet Standard	The school has failed to meet minimum expectations for performance.

<i>INDICATORS AND MEASURES</i>	<i>MEETS STANDARD?</i>
<i>ACADEMIC PERFORMANCE</i>	
State and Federal Accountability	MEETS STANDARD
Academic Proficiency	MEETS STANDARD
Academic Growth	MEETS STANDARD
Postsecondary Readiness	N/A 2016-17
School-Specific Academic Measure(s)	N/A 2016-17
<i>FINANCIAL PERFORMANCE</i>	
Near-Term Financial Health	MEETS STANDARD
Financial Sustainability	MEETS STANDARD
<i>ORGANIZATIONAL PERFORMANCE</i>	
Education Program Compliance (including services for special populations)	MEETS STANDARD
Financial Management and Oversight	MEETS STANDARD
Governance and Reporting	MEETS STANDARD
Students, Parents, and Employee Rights and Requirements	MEETS STANDARD
School Environment	MEETS STANDARD
Additional Obligations (if applicable)	N/A



## SCHOOL OVERVIEW

<i>SCHOOL NAME</i>	Pride Prep Charter School
<i>GRADES SERVED</i>	6,7,8
<i>SCHOOL ADDRESS</i>	811 East Sprague Avenue, Suite A Spokane, WA 99202
<i>SCHOOL CONTACT INFORMATION</i>	Brenda McDonald, Head of School <a href="mailto:brenda@prideschools.org">brenda@prideschools.org</a> (509) 309-7680
<i>SCHOOL WEBSITE</i>	<a href="http://www.prideprepschool.org">www.prideprepschool.org</a>
<i>NEIGHBORHOOD LOCATION</i>	East Central
<i>AREAS SERVED</i>	Spokane and Vicinity
<i>LEADERSHIP</i>	Michael Cannon, Board Chair Brenda McDonald, Head of School Jonny Whitmore, Solutions Strategist Marcia Via, Connections Strategist
<i>SCHOOL MISSION</i>	To prepare a diverse range of students for a life of learning in post-secondary education, citizenship, and leadership.
<i>TOTAL STUDENT ENROLLMENT IN 2016-17</i>	242

2016-17 OSPI STUDENT DEMOGRAPHIC DATA

<b>Student Demographics</b>		
<b>Enrollment</b>		
October 2016 Student Count		242
May 2017 Student Count		232
<b>Gender (October 2016)</b>		
Male	143	59.1%
Female	99	40.9%
<b>Race/Ethnicity (October 2016)</b>		
Hispanic / Latino of any race(s)	10	4.1%
American Indian / Alaskan Native	9	3.7%
Asian	2	0.8%
Black / African American	22	9.1%
Native Hawaiian / Other Pacific Islander	1	0.4%
White	176	72.7%
Two or More Races	22	9.1%
<b>Special Programs</b>		
Free or Reduced-Price Meals (May 2017)	122	52.6%
Special Education (May 2017)	42	18.1%
Transitional Bilingual (May 2017)	0	0.0%
Migrant (May 2017)	0	0.0%
Section 504 (May 2017)	7	3.0%



I. ACADEMIC PERFORMANCE

MEETS STANDARD

This section provides an overview of the school's performance in the year reviewed on a variety of academic measures the school is accountable for achieving, as established by applicable federal and state law and the charter contract.

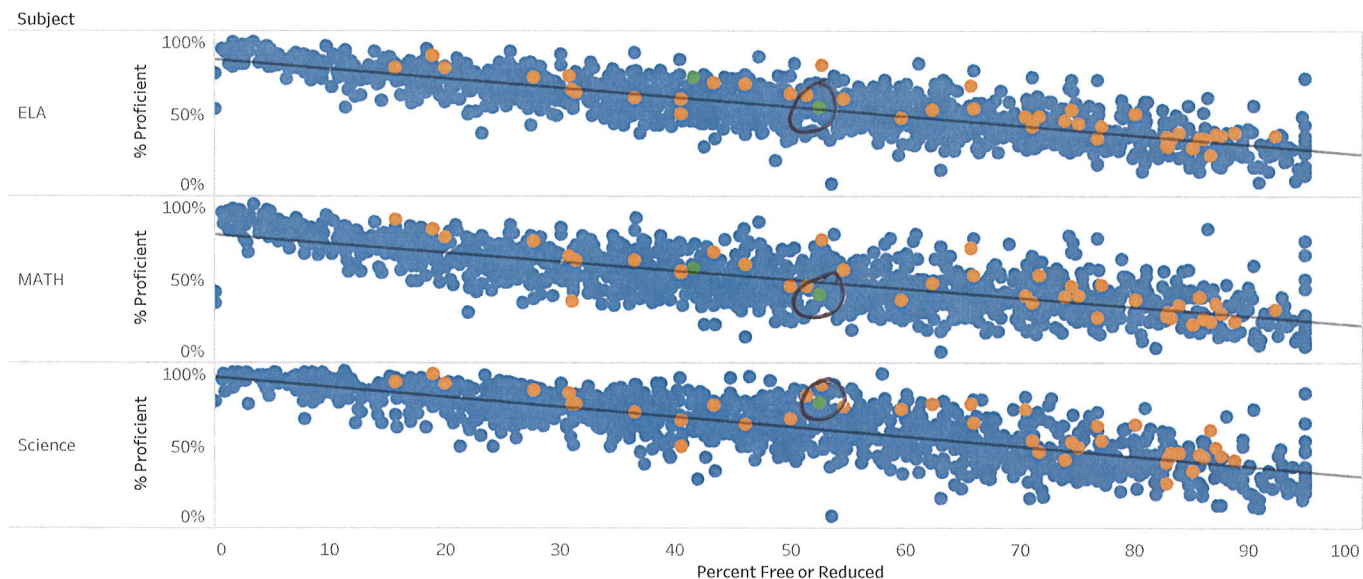
INDICATORS AND MEASURES	SCHOOL PERFORMANCE	MEETS STANDARD?	NOTES
<i>STATE AND FEDERAL ACCOUNTABILITY</i>			
State Rating		MEETS STANDARD	
<i>STUDENT ACADEMIC PROFICIENCY</i>			
Proficiency – English (All)		MEETS STANDARD	
Proficiency – English (Subgroups)		MEETS STANDARD	
Proficiency Comparison – English		MEETS STANDARD	
Proficiency – Math (All)		MEETS STANDARD	
Proficiency – Math (Subgroups)		MEETS STANDARD	
Proficiency Comparison – Math		MEETS STANDARD	
<i>STUDENT ACADEMIC GROWTH</i>			
Growth – English (All)		MEETS STANDARD	
Growth – English (Subgroups)		MEETS STANDARD	
Growth – Math (All)		MEETS STANDARD	
Growth – Math (Subgroups)		MEETS STANDARD	
<i>POSTSECONDARY READINESS</i>			
Post-secondary Readiness		N/A 2016-17	
<i>SCHOOL-SPECIFIC ACADEMIC MEASURES (IF APPLICABLE)</i>			
Mission-Specific Academic Goal(s)		N/A 2016-2017	

School Name  
Choose a School

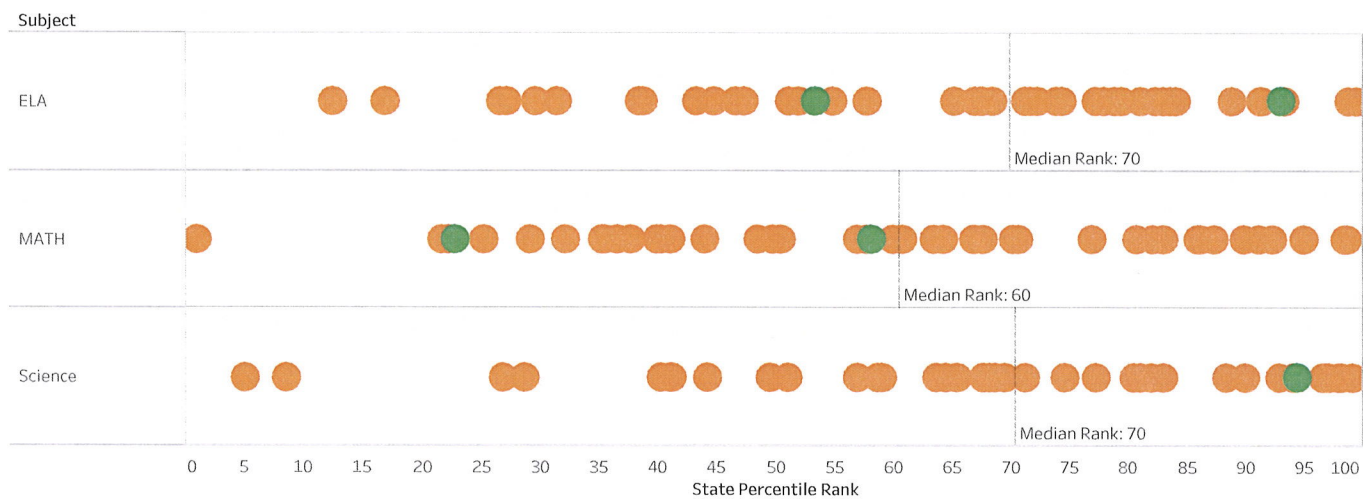
School Year  
2016-2017

Grade Level  
Multiple values

### State Comparison



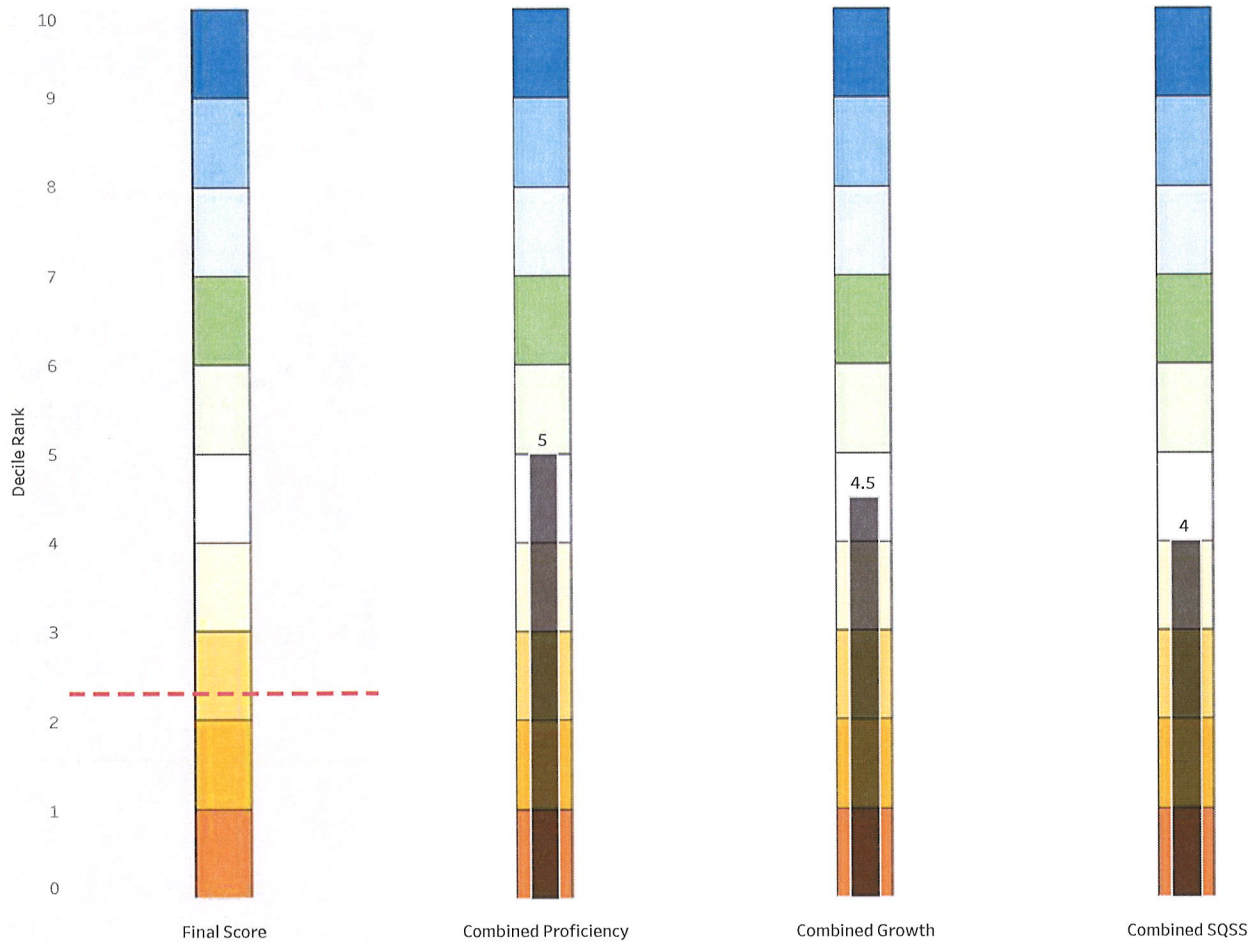
### State Percentile Ranking



# PRIDE Prep State Index Storyboard

ESSA Index Indicators and Final Score	Final Score by Subgroup	Proficiency and Growth by Subgroup	English Learner Progress	School Quality or Student Success (EL/MS - Chronic Absenteeism)
---------------------------------------	-------------------------	------------------------------------	--------------------------	---

School Name  
PRIDE Prep School



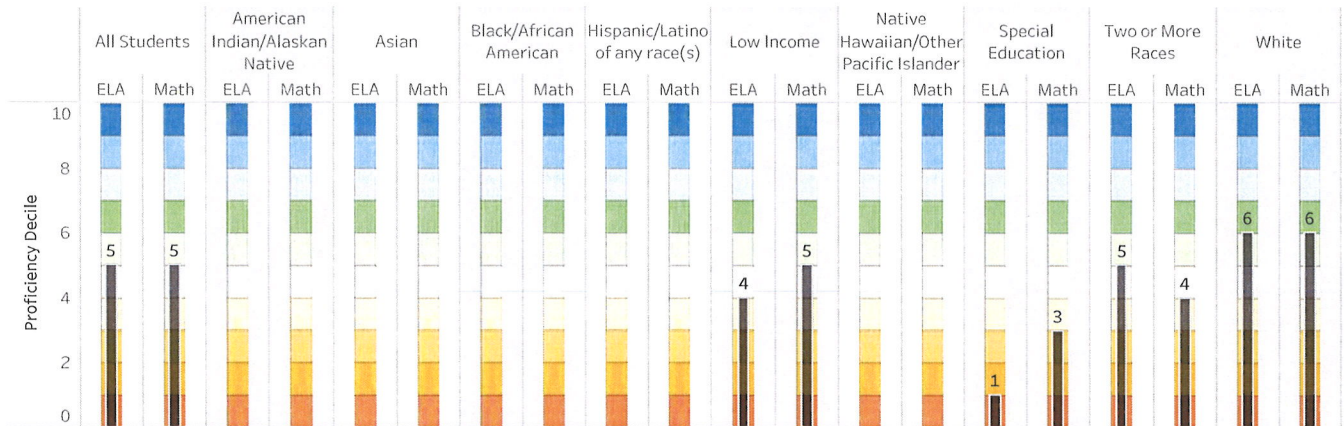


# PRIDE Prep State Index Storyboard

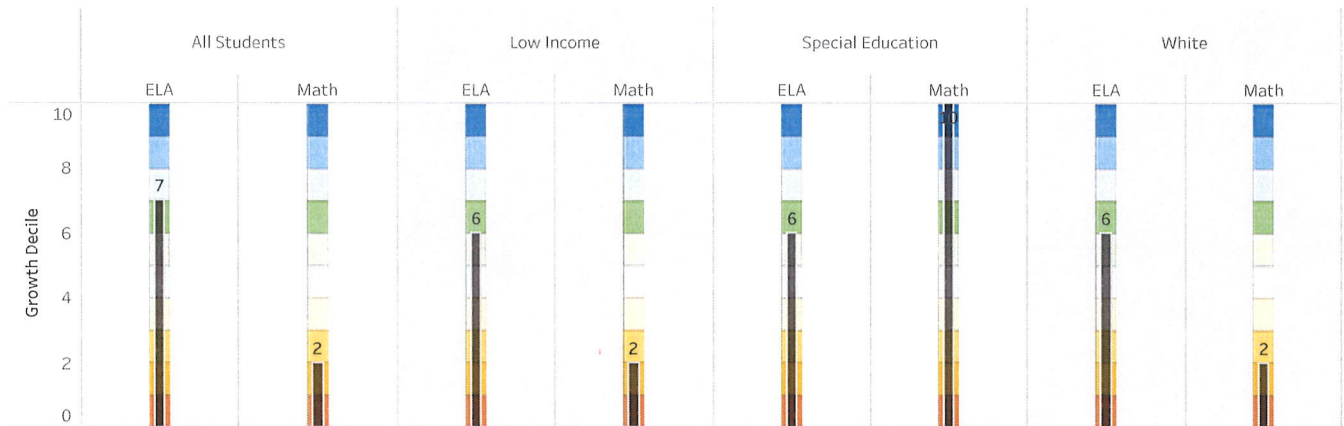
ESSA Index indicators and Final Score	Final Score by Subgroup	Proficiency and Growth by Subgroup	English Learner Progress	School Quality or Student Success (EL/MS - Chronic Absenteeism)
---------------------------------------	-------------------------	------------------------------------	--------------------------	---

School Name  
PRIDE Prep School

## Proficiency by Subgroup



## Growth by Subgroup



## II. FINANCIAL PERFORMANCE

MEETS STANDARD

This section provides an overview of the school's performance in the year reviewed, and a view of recent historical trends, on financial measures the school is accountable for achieving, as established by applicable federal and state law and the charter contract. These measures provide information about the school's financial health and sustainability.

### *Near-Term Measures*

- **Current Ratio** measures a school's ability to pay its obligations over the next 12 months (calculated as the ratio of short-term assets to short-term liabilities).
- **Unrestricted Days Cash on Hand** indicates how many days the school could operate without receiving additional funding (calculated as the school's total cash divided by the average daily cost to operate the school).
- **Enrollment Variance** shows how well the school is meeting its enrollment projections (calculated as actual enrollment divided by enrollment projection in the school's board-approved budget).
- **Debt Default** indicates whether a school is meeting its debt obligations or covenants.

### *Sustainability Measures*

- **Total Margin** measures a school's revenues compared to its expenses—i.e., did the school operate at a surplus or deficit in the given time period?
- **Debt to Asset Ratio** compares the school's financial liabilities to its assets.
- **Cash Flow** indicates the trend in the school's cash balance over a period of time (similar to Days Cash on Hand, but indicating long-term vs. near-term sustainability).

YEAR 1: 2016-17	FY 16-17 VALUE	MEETS STANDARD?	RATING STANDARD
<i>NEAR-TERM MEASURES</i>			
1.a. Current Ratio	15.02	MEETS STANDARD	Current Ratio is greater than or equal to 1.0
1.b. Unrestricted Days Cash on Hand	27	Does Not Meet Standard	30 Days Cash (Due to construction costs for High School Expansion)
1.c. Enrollment Variance	100.3%	MEETS STANDARD	Enrollment Variance equals or exceeds 95%
1.d. Debt Default	N/A	MEETS STANDARD	No evidence of default
<i>SUSTAINABILITY MEASURES</i>			
2.a. Total Margin	4%	MEETS STANDARD	Total Margin is positive
2.b. Debt to Asset Ratio	.07	MEETS STANDARD	Debt to Asset Ratio is less than .90
2.c. Cash Flow	88,168	MEETS STANDARD	Positive one-year Cash Flow



III. ORGANIZATIONAL PERFORMANCE

MEETS STANDARD

Charter schools are required to meet certain regulatory requirements and responsibilities as established by applicable state and federal law and their charter contracts. This section reports the school's overall performance in the year reviewed in fulfilling legal requirements and fiduciary/public stewardship responsibilities, and other measures relevant to organizational health and performance.

INDICATORS AND MEASURES	MEETS STANDARD?	NOTES
1.a. Implementing the material terms of the education program as defined in the current charter contract	MEETS STANDARD	
1.b. Complying with applicable education requirements	MEETS STANDARD	
1.c. Protecting the rights of students with disabilities	MEETS STANDARD	
1.d. Protecting the rights of English Language Learner (ELL) students	MEETS STANDARD	
<i>FINANCIAL MANAGEMENT AND OVERSIGHT</i>		
2.a. Meeting financial reporting and compliance requirements	MEETS STANDARD	
2.b. Following Generally Accepted Accounting Principles (GAAP)	MEETS STANDARD	
<i>GOVERNANCE AND REPORTING</i>		
3.a. Complying with governance requirements	MEETS STANDARD	
3.b. Holding management accountable	MEETS STANDARD	
3.c. Complying with reporting requirements	MEETS STANDARD	
<i>STUDENT AND EMPLOYEE RIGHTS AND REQUIREMENTS</i>		
4.a. Protecting the rights of all students	MEETS STANDARD	
4.b. Meeting recurrent enrollment requirements	MEETS STANDARD	
4.c. Meeting teacher and other staff credentialing requirements	MEETS STANDARD	
4.d. Respecting employee rights	MEETS STANDARD	
4.e. Completing required background checks	MEETS STANDARD	
<i>SCHOOL ENVIRONMENT</i>		
5.a. Complying with facilities and transportation requirements	MEETS STANDARD	
5.b. Complying with health and safety requirements	MEETS STANDARD	
5.c. Handling information appropriately	MEETS STANDARD	
<i>ADDITIONAL OBLIGATIONS</i>		
6.a. Complying with all other obligations	MEETS STANDARD	