

## AUGUST

| MON | TUE | WED | THUR | FRI |
|-----|-----|-----|------|-----|
| 3   | 4   | 5   | 6    | 7   |
| 10  | 11  | 12  | 13   | 14  |
| 17  | 18  | 19  | 20   | 21  |
| 24  | 25  | 26  | 27   | 28  |
| ◆31 |     |     |      |     |

## SEPTEMBER

| MON | TUE | WED | THUR | FRI |
|-----|-----|-----|------|-----|
|     | ◆1  | ◆2  | ◆3   | ◆4  |
| 7   | (8) | 9   | 10   | 11  |
| 14  | 15  | 16  | 17   | 18  |
| 21  | 22  | 23  | 24   | 25  |
| 28  | 29  | 30  |      |     |

## OCTOBER

| MON | TUE | WED | THUR | FRI |
|-----|-----|-----|------|-----|
|     |     |     | 1    | 2   |
| 5   | 6   | 7   | 8    | 9   |
| 12  | 13  | 14  | 15   | 16  |
| 19  | 20  | 21  | 22   | 23  |
| 26  | 27  | 28  | 29   | 30  |

## NOVEMBER

| MON | TUE | WED | THUR | FRI |
|-----|-----|-----|------|-----|
| 2   | 3   | 4   | 5    | 6   |
| 9   | 10  | 11  | 12   | 13  |
| 16  | 17  | 18  | 19   | 20  |
| 23  | 24  | 25  | 26   | 27  |
| 30  |     |     |      |     |

## DECEMBER

| MON | TUE | WED | THUR | FRI |
|-----|-----|-----|------|-----|
|     | 1   | 2   | 3    | 4   |
| 7   | 8   | 9   | 10   | 11  |
| 14  | 15  | 16  | 17   | 18  |
| 21  | 22  | 23  | 24   | 25  |
| 28  | 29  | 30  | 31   |     |

## JANUARY

| MON | TUE | WED | THUR | FRI |
|-----|-----|-----|------|-----|
|     |     |     |      | 1   |
| 4   | 5   | 6   | 7    | 8   |
| 11  | 12  | 13  | 14   | 15  |
| 18  | 19  | 20  | 21   | 22  |
| 25  | 26  | 27  | 28   | 29  |

## SIGNIFICANT DATES

Aug. 31- Sept. 4.....Teacher Workday/Prof. Learning Imp. Day  
 Sept. 7.....Labor Day - No School  
 Sept. 8.....First Day of School  
 Sept. 8-11.....K-12 Launch Conferences  
 Sept. 14.....Real-Time Distance Learning Starts  
 Nov. 11.....Veteran's Day - No School  
 Nov. 25-27.....Thanksgiving Break  
 Dec. 21-Jan. 1.....Winter Break  
 Jan. 18.....MLK Day - No School  
 Feb. 1.....Semester Break Day - No School  
 Feb. 15.....President's Day - No School  
 Mar. 5.....Teacher Workday/Prof. Learning Imp. Day  
 Mar. 29-Apr. 2.....Elementary Conferences  
 Apr. 5-9.....Spring Break  
 May 31.....Memorial Day - No School  
 June 18.....Last day of School 1/2 day

### ELEMENTARY GRADING PERIODS

Jan. 29.....End of First Semester Elementary  
 June 18.....End of Second Semester Elementary

### ELEMENTARY REPORTING

**First Grading Period**  
 Feb. 8.....Report Cards

**Second Grading Period**  
 June 18.....Report Cards

### SECONDARY GRADING PERIODS

Nov. 6.....End of First Quarter  
 Jan. 29.....End of First Semester  
 Apr. 16.....End of Third Quarter  
 June 18.....End of Second Semester

### SECONDARY REPORTING

Nov. 17.....First Quarter Report Cards Secondary  
 Feb. 8.....First Semester Report Cards Secondary  
 Apr. 26.....Third Quarter Report Cards  
 June 24.....Second Semester Report Cards

## FEBRUARY

| MON | TUE | WED | THUR | FRI |
|-----|-----|-----|------|-----|
| ①   | 2   | 3   | 4    | 5   |
| 8   | 9   | 10  | 11   | 12  |
| 15  | 16  | 17  | 18   | 19  |
| 22  | 23  | 24  | 25   | 26  |

## MARCH

| MON | TUE | WED | THUR | FRI |
|-----|-----|-----|------|-----|
| 1   | 2   | 3   | 4    | ◆5  |
| 8   | 9   | 10  | 11   | 12  |
| 15  | 16  | 17  | 18   | 19  |
| 22  | 23  | 24  | 25   | 26  |
| 29  | 30  | 31  |      |     |

## APRIL

| MON | TUE | WED | THUR | FRI |
|-----|-----|-----|------|-----|
|     |     |     | 1    | 2   |
| 5   | 6   | 7   | 8    | 9   |
| 12  | 13  | 14  | 15   | 16  |
| 19  | 20  | 21  | 22   | 23  |
| 26  | 27  | 28  | 29   | 30  |

## MAY

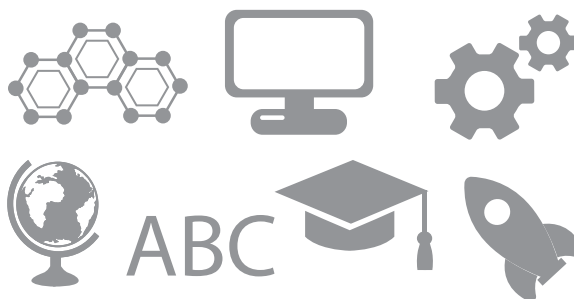
| MON | TUE | WED | THUR | FRI |
|-----|-----|-----|------|-----|
| 3   | 4   | 5   | 6    | 7   |
| 10  | 11  | 12  | 13   | 14  |
| 17  | 18  | 19  | 20   | 21  |
| 24  | 25  | 26  | 27   | 28  |
| 31  |     |     |      |     |

## JUNE

| MON | TUE | WED | THUR | FRI |
|-----|-----|-----|------|-----|
|     | 1   | 2   | 3    | 4   |
| 7   | 8   | 9   | 10   | 11  |
| 14  | 15  | 16  | 17   | ⑱   |
| 21  | 22  | 23  | 24   | 25  |
| 28  | 29  | 30  |      |     |

### LEGEND

- First/Last day of School
- Holiday
- No School/School Break Day
- Afternoon or All-Day Conferences
- ◆ Teacher Workday/Prof. Learning Imp. Day



# 2020-2021 SPS Calendar